

WELLESLEY RESERVE PLAYSPACE

ACCESS KEY

A customised accessibility guide

40-42 Glen Tower Drive,
Glen Waverley
Phone: 9518 3555 (Monash Council)
[Website](#)

Updated July 2022 V1.0

Content and Glossary

Guidelines	3
Did you know?	4
Getting There	5
Parking	6
Map	7
Playspace Entry	8
Sensory Garden and Explorer Trail	9
- Sound Sculptures	10
- Wavy Mirror	11
- Seat Cup Spinner	12
- Log Steppers	13
- Squeeze Gate	14
Sensory Garden and Explorer Trail	
Seating	15
- Rock Seating	16
- Seating	17-18
- Health and Wellbeing Benefits	19
Existing Playground	20
- Equipment	21
- Balancing Log	22
- Seating	23
- Health and Wellbeing Benefits	24
Accessibility	25
Safety	26
Contact	27

Actively supervise - Parents must have their children within eyesight at all times when actively supervising.

AFFL - Above finished floor level.

Balance - A biological system that enables us to maintain a body's desired position and requires a number of sensory systems to work together. Good balance builds better posture, helps to prevent falling over when standing or moving, improves coordination and increases muscular power.

Coordination - The ability to use different parts of the body together, smoothly and efficiently. Good coordination can protect children from falling and injuries. These skills are needed for participation in everyday tasks as well as active participation in playgrounds and sports.

Cause and effect - When something happens that makes something else happen.

Cognition - Refers to the mental processes involved in acquiring knowledge and understanding. These processes include knowing, thinking, remembering problem solving and judging.

Collaborative play - Refers to play that involves sharing, following rules, taking turns, compromising and negotiating.

Core strength - Stabilises and controls your abdominal muscles, back muscles and the muscles around the pelvis, which all influences the legs and upper body.

Creativity - The use of imagination or original ideas to create something.

Dexterity - The skill a person has with physical movement, particularly with their hands or body.

Fine motor skills - Involves the use of the small muscles in the hands.

Flexibility - The ability of joints to move through a range of motion while unrestricted and pain-free.

Gross motor skills - Involves the use of the large muscles of the body.

Hand-eye coordination - The synchronisation of eye and hand movements.

Imagination - The ability to produce and simulate novel objects, people and ideas in the mind without any immediate input of the senses.

Motor planning - The ability to remember and perform steps to make a movement happen.

Proprioception - Awareness of position and movement of the body.

Sensory awareness - The direct focus on specific sensory aspect/s of the body or the outer/inner environment.

Socialise - Practice taking turns, team building and collaborative play.

Spatial awareness - Knowing where your body is in space in relation to objects or other people.

Strength building - Refers to the force that a muscle can produce.

TGSI - Tactile ground surface indicators. A tactile ground surface to assist pedestrians who are visually impaired. Often found on footpaths, stairs and train station platforms.

Vestibular - Awareness of balance and spatial orientation in order to coordinate movement with balance.

Guidelines

Thank you for choosing to use an Access Key for Wellesley Reserve Play Space. This customised accessibility guide provides convenient information. Access Keys are universally designed and suitable for all people, regardless of ability.

For your Access Key to be successful, we recommend you follow these guidelines:

- Access Keys are available online to help you prepare for your visit in advance
- Access Keys should be read and shared in an environment free of distractions
- Access Keys can be read independently or shared with a friend, family member, carer or support worker to prepare for the visit
- If sharing the Access Key with participant, help participant comprehend key points, consistently monitoring for level of understanding
- If sharing the Access Key with participant, contextualised photographs can be used to summarise information and experiences
- If using the Access Key as a reflective tool, make sure to enjoy the pivotal link between experience and recall after the visit has taken place
- Once the visit has taken place, revisit the Access Key to celebrate success
- Accessibility information is located on page [25](#)
- Safety information is located on page [26](#)
- Download Access Key in its entirety - 27 pages in total.



**Access
Ability
Australia**

Access Keys are designed and developed by AccessAbilityAustralia.

To view the full range of free Access Keys available, go to [AAA Library](#).

For Access Keys in Braille or audio, please [Contact Us](#).

Please complete our short [survey](#) to help us ensure continuous improvement.

© Access Ability Australia, All Rights Reserved. 2021 DISCLAIMER: All materials have been compiled from information available at time of production. They are not intended to replace professional advice including; but not limited to, access audits. All necessary care has been taken to design and produce Work(s). All measurements provided are within an approximate range. Full implementation guidelines are supplied in accordance with Work(s) in its entirety. You acknowledge and agree that you are using all services and facilities provided by Access Ability Australia at your own risk and you agree to defend, indemnify, save and hold Access Ability Australia harmless from any and all demands, liabilities, costs, losses and claims, howsoever suffered, including but not limited to legal fees that may arise directly or indirectly from any service provided or agreed to be provided by Access Ability Australia. You agree that this indemnification extends to all aspects of the Work(s), including but not limited to implementation and usage. Access Ability Australia are indemnified of all claims, liability, and expenses that may arise from use of Work(s) as per usage and acceptance of these terms and conditions. This Access Key is not to be altered by any parties without express permission of Access Ability Australia.



Did You Know?

- Wellesley Reserve Playspace is proudly owned and operated by Monash Council.
- View [Monash Health and Wellbeing Plan](#)
- Wellesley Reserve Playspace is the first of its kind in Monash, designed as a sensory play experience. This beautiful playspace was upgraded in 2019 and includes:
 - Spaces for children and families to sit, relax or enjoy a picnic
 - A sensory garden and explorer trail featuring a butterfly mosaic, artwork and textured pathways
 - Engaging sound sculptures
 - Play equipment within the sensory garden, including a wavy mirror, squeeze gate, seated cup spinner, log climber and log steppers
 - Existing playground that features traditional play equipment aimed at engaging and challenging young children.
- To provide feedback on Wellesley Reserve Playspace, please contact Monash Council on 9518 3555 or email mail@monash.vic.gov.au



Sensory Play

Sensory play has benefits for all children, particularly those with additional needs. Sensory play supports a child's ability to regulate themselves by ensuring that all sensory requirements are met to help keep a child at an optimal state of arousal in order to participate in all other daily activities.

Sight, smell, sound, touch and taste help children's brains develop as they use their senses to help learn about the world around them. Sensory play helps develop fine and gross motor skills through activities such as splashing, climbing, throwing, and shaping – skills that can be transferred to daily life skills, such as using a fork.

Sensory play helps develop social skills and encourages children to communicate, both verbally and non-verbally, when they discover new sensations.

Sensory play that involves natural elements, such as gardens, rocks and water, can also have calming qualities for children who feel overwhelmed in busy environments such as playgrounds.



Getting There

Wellesley Reserve Playspace is located at 40-42 Glen Tower Drive, Glen Waverley.

See Google Maps reference [here](#).

Train

The closest station to Wellesley Reserve Playspace is Glen Waverley Station.

Bus

The nearest bus stop is 470 metres from the playspace, on the corner of Glen Tower Drive and Gallaghers Reserve, Glen Waverley. Bus routes 736 and 737 will get you there.

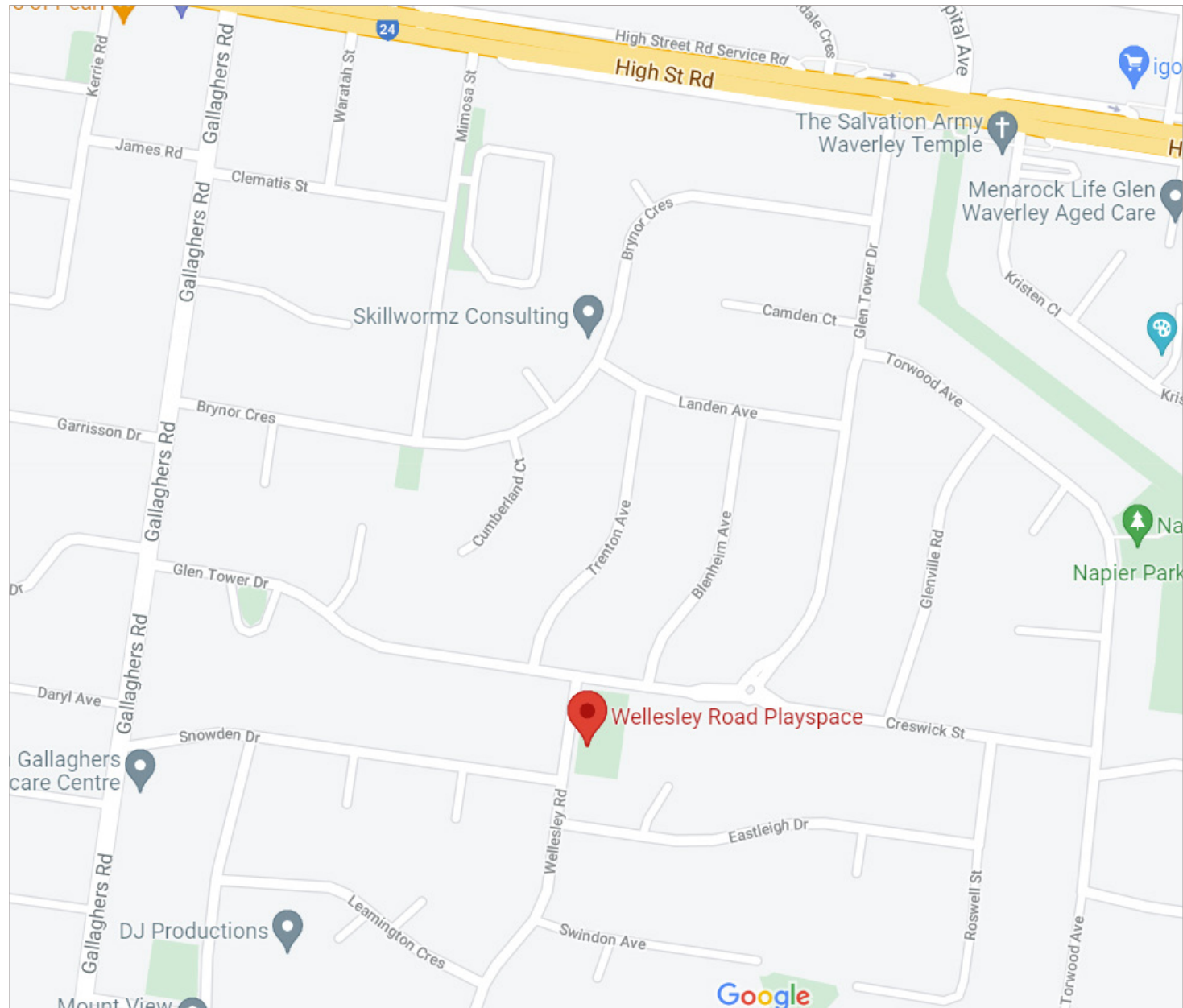
For further information on how to get to Wellesley Reserve Playspace, please visit [Public Transport Victoria](#).



Parking

The most convenient parking for Wellesley Reserve Playspace is located around the surrounding streets.

Parking, with no restrictions, is available on both Wellesley Road and Glen Tower Drive, Glen Waverley.






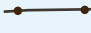
Map




Map Key

- 1 Access point
- 2 Explorer trail through garden beds
- 3 Bluebird
- 4 Dragonfly mosaic
- 5 Sound tumbler
- 6 Sound flower
- 7 Tyre bouncers
- 8 Wavy mirror
- 9 Seated cup spinner
- 10 Log steppers
- 11 Squeeze gate
- 12 Rock seating
- 13 Timber seat pods
- 14 Children's picnic setting
- 15 Sensory garden picnic setting
- 16 Climbing structure
- 17 Swings
- 18 Seesaw
- 19 Balancing log

 Bench seating  Log bench

 Picnic seating  Fence

 Waste bins

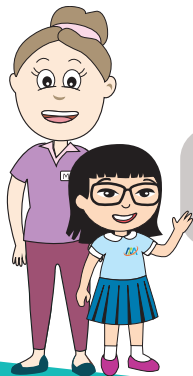
Playspace Entry

There is one convenient access point via a dragonfly iron gate.

The dragonfly iron gate is located on Wellesley Road, near the corner of Glen Tower Drive.

This gate is a manual latch swing gate which opens outward with a clearance of 1390mm.

Parents and carers must have their children within eyesight at all times.



Parents and carers to supervise at all times.



SENSORY GUIDE



Feel

Shared personal space
Weather



Sounds

Birds
Children playing
Gate latch
Gate creak



Sounds

Musical instruments
Nature
People
Traffic



Sights

Flying insects
Glare | Nature
Play equipment
People



Smells

Nature
Sunscreen
Tanbark

Sensory Garden and Explorer Trail

The sensory garden and explorer trail is the highlight of Wellesley Reserve Playspace. Every part of this area has been carefully designed to stimulate a wide variety of sensory experiences, while the sensory garden offers a tranquil place to relax.

Location

1. Go through the entry gate.
2. Proceed straight ahead.
3. Take the first pathway right.
4. This circular path becomes the explorer trail and surrounding sensory garden.

Children can also enter the sensory garden from the existing playground via the squeeze gate, which is located in the middle of the fence, separating the playground from the sensory garden.

Includes:

- Sensory garden with more than 400 shrubs, climbers and Groundcovers of different textures, smells and colours
- Pathways with different textures and colours. Pathways lead to various pieces of play equipment
- Shiny bluebird
- Built-in dragonfly mosaic
- Open grassed area for free play and ball games.



Sound Sculptures

Sensory Garden and Explorer Trail

Sound sculptures and sound tyre bouncers are part of the sensory experience for children visiting Wellesley Reserve Playspace.

Sound Tumbler



The sound tumbler is located at the start of the explorer trail, just past the water fountain, on the left.

The stainless-steel sound tumbler has an operating height of 1130mm AFFL. Rotate the tumbler with hands to hear tumble tones and a cathedral timbre effect. It also features raised spiral dots, offering a tactile sensory experience.

Sound Flower



The sound flower is located on the right-hand side of the explorer trail, near the rock seating.

The sound flower has an operating height of 580mm AFFL. It has a soft rubber mallet suspended from the centre of the disk flower head, which can be used to bang the flower. The banging makes a vibration sound. Rotate the head of the flower using hands.

Tyre Bouncers



The tyre bouncers are located in the centre of the sensory garden, directly ahead of the butterfly mosaic.

Each tyre has a height of 150mm AFFL. There are three sound tyre bouncers. Each one makes a different sound: accordion, train or squeaky sound. Make the sounds by jumping or bouncing on top of each of tyre.

SENSORY GUIDE



Feel

- Balance control
- Change in ground surface
- Shared personal space
- Uneven ground
- Weather



Sounds

- Birds
- Children playing
- Musical instruments
- People
- Traffic



Sights

- Flying insects
- Glare
- Nature
- People



Smells

- Nature
- Sunscreen
- Tanbark

Wavy Mirror

Sensory Garden and Explorer Trail

Wellesley Reserve Playspace has a wavy mirror, providing fun entertainment for visitors as they see a distorted image of themselves when they look at their own reflection.

The wavy mirror is located on the right-hand side of the explorer trail, near the rock seating.



SENSORY GUIDE



Feel

Shared personal space
Weather



Sounds

Birds
Children playing
Musical instruments
People
Traffic



Sights

Distorted mirror reflection
Flying insects
Glare
Nature
People



Smells

Nature
Sunscreen
Tanbark

Seated Cup Spinner

Sensory Garden and Explorer Trail

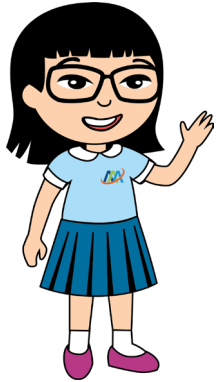
The seated cup spinner offers multiple users the experience of spinning, which creates energy and excitement.

Location

1. Follow the explorer trail past the wavy mirror.
2. Take the first pathway on the right.
3. The cup spinner is at the end of this pathway.

The cup spinner has stepped entry.

It is operated by spinning the steering wheel in the centre.



Stay Safe:

- Do not exceed a spinning speed that is comfortable for you or others
- Parents and carers to supervise at all times
- Take caution of people entering.



SENSORY GUIDE



Feel

Change in ground surface
Dizziness
Increased body temperature



Feel

Increased heart rate
Shared personal space
Weather
Weightlessness



Sounds

Birds
Children playing
Musical instruments
People
Weather



Sights

Flying insects
Glare
Nature
People



Smells

Nature
Sunscreen
Tanbark

Log Steppers

Sensory Garden and Explorer Trail

The log steppers at Wellesley Reserve Playspace give the opportunity to practice climbing, balancing and jumping-off at a safe height from the ground.

Log Steppers

Location

1. Follow the explorer trail past the wavy mirror.
2. The log steppers are located just after the rock seating.

There are six timber log steppers safely embedded in the ground. The log steppers are of varying heights ranging between 240mm and 490mm AFFL. Visitors can step up on the steppers and jump from one to the other.



SENSORY GUIDE



Feel

Balance control
Change in ground surface
Shared personal space
Uneven surfaces
Weather



Sounds

Birds
Children playing
Musical instruments
People
Traffic



Sights

Flying insects
Glare
Nature
People



Smells

Nature
Sunscreen
Tanbark
Timber

Squeeze Gate

Sensory Garden and Explorer Trail

Wellesley Reserve Playspace has a squeeze gate. Visitors need to crouch down and squeeze through the rubber bendable bars. The squeeze gate is attached to a fence that separates the existing playground from the sensory garden and explorer trail.

Location

1. Go through the entry gate.
2. Proceed straight ahead into the existing playground.
3. Go past the fence on the right, which separates the existing playground from the sensory garden.
4. The squeeze gate is located in the middle of this fence.



SENSORY GUIDE



Feel

Change in ground surface
Pressure on body
Resistance



Feel

Shared personal space
Uneven surfaces
Weather



Sounds

Birds
Children playing
Musical instruments
People
Traffic



Sights

Flying insects
Glare
Nature
People



Smells

Nature
Sunscreen
Tanbark

Sensory Garden and Explorer Trail Seating

There are several seating options available in the sensory garden of Wellesley Reserve Playspace for people to relax, picnic and socialise together.



Rock Seating

Sensory Garden and Explorer Trail Seating

The rock seating is on the outer-right edge of the explorer trail.

The rock seating is made from salt and pepper granite and has different shapes and sizes. This seating area gives people an opportunity to relax and enjoy the natural features of the sensory garden.



SENSORY GUIDE



Feel

Change in ground surface
Shared personal space
Uneven ground
Weather



Sounds

Birds
Children playing
Musical instruments
People
Traffic



Sights

Flying insects
Glare
Nature
People



Smells

Nature
Sunscreen
Tanbark

Seating

Sensory Garden and Explorer Trail Seating

Timber Seat Pods



Location

1. Follow the explorer trail.
2. The timber seat pods are directly in front of the butterfly mosaic, next to the tyre bouncers.

Includes two custom, carved, hardwood timber seat pods with no back or armrests.

Children's Picnic Setting



Location

1. Follow the explorer trail past the butterfly mosaic.
2. Children's picnic setting is on the right.

The children's picnic setting includes:

- Round, carved timber table with a chess board top pattern
- Three hardwood timber stools with no back or armrests
- Three carved, timber armchairs with backs, no armrests.

Log Bench



Location

1. Follow the explorer trail past the wavy mirror.
2. Turn right. The log bench is on the right, close to the cup spinner.

It is a great viewing spot for parents and carers to supervise their children while they are using the cup spinner.

SENSORY GUIDE



Feel

Change in ground surface
Shared personal space
Uneven ground
Weather



Sounds

Birds
Children playing
Musical instruments
People
Traffic



Sights

Flying insects
Glare
Nature
People



Smells

Nature
Sunscreen
Tanbark

Seating

Sensory Garden and Explorer Trail Seating

Bench Seating

Location

1. Follow the explorer trail.
2. There are two bench seats. One on each side of the tyre bouncers. Bench seating has back and armrests.

Each bench seat allows parents or carers to supervise children as they play on the tyre bouncers or explore the sensory garden and explorer trail.



Picnic Setting

Location

1. Follow the explorer trail past the children's picnic setting.
2. Picnic setting is on the right.

This picnic setting is close to the sensory garden and tyre bouncers, allowing parents and carers to relax while supervising their children.

This picnic setting includes a picnic table with attached bench seating and no back or armrests.



SENSORY GUIDE



Feel

Change in ground surface
Shared personal space
Weather



Sounds

Birds
Children playing
Musical instruments
People
Traffic



Sights

Flying insects
Glare
Nature
People



Smells

Nature
Sunscreen
Tanbark



Sensory Garden and Explorer Trail

Health and Wellbeing Benefits

Being involved in regular moderate physical activity can provide many advantages. Play is helpful for sensory-seeking or sensory-sensitive people to assist with self-regulation, focus and attention. Play supports regulation by providing a variety of different audible, tactile, visual, proprioceptive and vestibular input to ensure children are able to meet their sensory requirements to keep themselves at an optimal level of arousal for participation in all other daily activities. Listed below are the associated health and wellbeing benefits of participating in play at Wellesley Reserve Play Space.

Sensory Garden and Explorer Trail:

- Can be a calming space for anyone who may be feeling overwhelmed
- Helps make sense of the world around by providing a range of experiences to stimulate the senses
- Helps to encourage imaginative play
- Natural areas improve physical fitness, health, mood and cognition.

Sound Sculptures and Tyre Bouncers:

- Helps to improve sensory awareness and allows people to explore the world around them
- Helps to improve fine motor skills and coordination
- Musical elements help people to develop and understand cause and effect
- Sensory elements of the sound sculptures can include tactile, auditory and manipulative activities
- Stimulates imagination and creativity.

Wavy Mirror:

- Encourages cognitive skills through problem solving
- Encourages imaginative play
- Encourages social interaction
- Stimulates the sense of sight, and encourages visual exploration.

Squeeze Gate:

- Pressure on the body can help reduce anxiety and arousal levels, therefore having a calming effect.

Seated Cup Spinner:

- Encourages people to socialise and practise turn taking, team building and collaborative play
- Helps to improve balance, core strength and proprioception
- Helps to train the sense of spatial awareness.

Log Steppers:

- Encourages motor planning
- Encourages problem solving
- Helps improve core body and lower body strength
- Stimulates the vestibular sense, which in turn promotes physical balance and coordination
- Improves balance.



Existing Playground

Location

1. Go through main entry gate.
2. Proceed straight ahead to the existing playground.

Equipment

Existing Playground

The existing playground features a two-level climbing structure. Climbing structure features include:

- Challenging entry points (steps, climbing wall and rope ladder)
- Shop front on the ground level
- Steering wheel on level one
- Fireman's pole
- Wave slide
- Monkey bars that allow visitors to swing and use their body to cross one piece of equipment to another.

Other equipment in the existing playground includes:

- Double frame swing set with one sling seat and one toddler seat
- Spider web climbing frame
- See-saw.

Stay Safe:

- Make sure to stand at the side of the swings while waiting your turn
- Do not walk in front or behind moving swings
- Do not swing faster or higher than the user is comfortable with.



SENSORY GUIDE



Feel

Change in ground surface
Heights
Increased body temp
Increased heart rate



Feel

Sensation of flying (swings)
Shared personal space
Rocking (see-saw)
Weather
Weightlessness (swings)



Sounds

Birds
Children playing
Musical instruments
Traffic
Weather



Sights

Flying insects
Glare
Nature
People



Smells

Nature
Sunscreen
Tanbark

Balancing Log

Existing Playground

The balancing log gives visitors the opportunity to practice climbing, balancing and jumping-off at a safe height from the ground.

Location

The balancing log is located in the far-right corner of the existing playground.

This timber balancing log is securely embedded in the ground and has a maximum height of 450mm AFFL.



SENSORY GUIDE



Feel

Balance control
Change in ground surface
Shared personal space
Uneven surfaces
Weather



Sounds

Birds
Children playing
Musical instruments
People
Traffic



Sights

Flying insects
Glare
Nature
People



Smells

Nature
Sunscreen
Tanbark
Timber

Seating

Existing Playground

There are several seating options available in the existing play area of Wellesley Reserve Playspace for people to relax, picnic and socialise together.

Existing Play Area Location

1. Go through the entry gate.
2. Proceed straight ahead.
3. Take the first pathway on the left.

Picnic Setting

This picnic setting is close to the existing playground and allows parents and carers to relax while supervising their children.

This picnic setting includes a picnic table with attached bench seating and no back or armrests.



Log Bench

Location

1. Go past the swings.
2. Log bench is on the left.

It is a great viewing spot for the existing playground and is close to native shrubs and trees.



SENSORY GUIDE



Feel

Change in ground surface
Shared personal space
Uneven ground surface
Weather



Sounds

Birds
Children playing
Musical instruments
People
Traffic



Sights

Flying insects
Glare
Nature
People



Smells

Nature
Sunscreen
Tanbark



Existing Playground

Health and Wellbeing Benefits

Balancing Log:

- Encourages motor planning
- Encourages problem solving
- Helps improve core body and lower body strength
- Stimulates the vestibular sense, which in turn promotes physical balance and coordination
- Improves balance.

Climbing structure:

- Helps to encourage turn taking and cooperative play
- Helps to develop balance and core strength
- Helps to develop gross motor skills
- Helps to develop/improve proprioception
- The steering wheel provides an interactive and sensory experience for users and assists with fine motor skills and dramatic play.

Slide:

- Helps to encourage turn taking and cooperative play
- Helps to develop core strength
- Helps to develop gross motor skills
- Helps to develop/improve proprioception.

Monkey bars:

- Assists with balance, hand-eye coordination and posture
- Assists with flexibility and dexterity
- Encourages socialisation and turn taking
- Helps overcome challenges and builds confidence
- Helps to develop coordination and strength building
- Helps to facilitate development of fine and gross motor skills
- Improves coordination
- Improves motor planning ability
- Improves physical fitness.

Swings:

- Helps to develop balance and core strength
- Helps to encourage turn taking and cooperative play
- Stimulates the vestibular sense, which in turn promotes physical balance and coordination
- The smooth back and forth motion can be soothing and calming.

Spider Web Climbing Frame:

- Helps develop imagination
- Helps to develop coordination and strength building
- Improves motor planning ability
- Offers physically challenging opportunities.

See Saw:

- Encourages socialisation and cooperation
- Helps improve balance and mobility
- Helps improve strength as people need to use their legs and core muscles to rock backwards and forwards
- Rocking can be calming and relaxing.



Accessibility

Throughout:

- No accessible parking bays
- Pram ramp on the corner of Wellesley and Glen Tower Roads to external play space footpath
- Clear path of travel from external footpath to play space entry gate
- Access gate latch height at 1560mm AFFL
- For closest public toilets, please refer to the National Public Toilet Map <https://toiletmap.gov.au/>
- Drinking fountain near entry gate with operating heights 850mm AFFL and 620mm AFFL (for water bottles)
- Bins located next to entry gate. Height 1100mm AFFL
- Adequate space to park mobility aids and prams throughout
- Space for whole class/groups to gather
- Grassed area for people to gather/play
- Assistance animals welcome.

Seating:

- Rock seating with various heights ranging between 250mm AFFL and 630mm AFFL
- Existing playground picnic setting, table height 770mm AFFL
- Sensory garden and explorer trail picnic setting, table height 810mm AFFL
- Space at end of both picnic settings for wheelchair users to sit with friends
- Children's picnic setting, table height 370mm AFFL
- Children's picnic setting, hardwood timber stools each with a height of 300mm AFFL
- Children's picnic setting, timber armchairs each at height 300mm AFFL
- Smaller timber seat pod, height 300mm AFFL
- Taller timber seat pod, height 450mm AFFL
- Existing playground log bench, height 310mm AFFL
- Sensory garden and explorer trail log bench, height 450mm AFFL.

Sensory Garden and Explorer Trail:

- Sensory trail pathways include a recycled hardwood sleeper path, a bluestone path, a mosaic path, cobblestones, limestone pavers, concrete, a pebble path, marbles (made from granite rocks) and soft fall play surfaces
- Explorer trail width varies from a minimum of 680mm to fully-accessible
- Explorer trail varying in gradient.

Wavy Mirror:

- Height 1300mm AFFL.

Squeeze Gate:

- Bars stretch to a maximum width of 260mm
- Bottom bar of squeeze gate at 160mm AFFL
- Height of squeeze gate 1080mm AFFL.

Seated Cup Spinner:

- Diameter 1400mm
- Stepped entry at 560mm AFFL.

Balancing Log:

- Length 3200mm
- Diameter 500mm
- Maximum height 450mm AFFL.

Existing playground:

- All equipment is accessed via tanbark ground cover
- Climbing structure platform prior to step entry at 270mm AFFL
- Climbing structure shop front with height 690mm AFFL
- Climbing structure with steering wheel on level one at height 770mm AFFL
- Monkey bar platform with height 270mm AFFL
- Monkey bar length 2650mm.

Safety

Throughout:

- Fully fenced
- Terrain includes concrete, timber decking, soft mulch, soft fall play surface, rocks, stones, tanbark, pavers and grass
- Overhead hazards include trees and play equipment
- Children must be actively supervised at all times
- Smoking and alcohol not permitted within the playspace
- In the event of an emergency, please call 000.

Seating:

- Rock seating with soft fall mulch at the rear
- Maximum height of rock seating from ground 630mm AFFL.

Sensory Garden and Explorer Trail:

- Uneven surfaces
- Explorer trail pathway with crossfall.
- Tyre bouncers with anti-slip rubber surface top
- Wavy mirror surrounded with soft fall mulch behind.

Seated Cup Spinner:

- Safety zone
- Soft fall play surface.

Balancing Log and Log Steppers:

- Soft fall mulch on surrounding ground.

Existing Playground:

- Double swing frame with soft fall safety mat underneath, measuring 3270mm x 3200mm
- Climbing structure stepped entry with double handrails
- Level one of climbing structure at height 1120mm AFFL. Not fully enclosed
- Level two climbing structure at height 1460mm AFFL. Not fully enclosed
- Monkey bar maximum height 2060mm AFFL
- Spider web climbing frame maximum height 2130mm AFFL
- No soft fall play surface underneath spider web climbing frame
- See-saw seat height 460mm AFFL
- No soft fall play surface underneath see-saw.





WELLESLEY RESERVE PLAYSPACE

40-42 Glen Tower Drive, Glen Waverley

Phone: 9518 3555 (Monash Council)

Email: mail@monash.vic.gov.au