

WESTERFIELD DRIVE PLAYSPACE

ACCESS KEY

A customised accessibility guide

Westerfield Drive, Notting Hill
Phone: 9518 3555 (Monash Council)
[Website](#)

Updated May 2023 V1.0

Contents and Glossary

Guidelines	3
Did You Know?	4
Getting There	5
Parking	6
Map	7
Playspace Entry	8
Toilets	9
Playground	10
Sensory Trail	11
Gardens	12
Interactive Play Panels	13
Music Play Equipment	14
Water Pump and Log Channel	15
In-ground Trampoline	16
Junior Basket Swing	17
Junior Multi-Play Unit	18
Seating	19 - 20
Village Green	21 - 22
Double Swings	23
Seating	24
Health and Wellbeing Benefits	25
Accessibility	26
Safety	27
Contact	28

Actively supervise - Parents must have their children within eyesight at all times when actively supervising.

AFFL - Above finished floor level.

Balance - A biological system that enables us to maintain a body's desired position and requires a number of sensory systems to work together. Good balance builds better posture, helps to prevent falling over when standing or moving, improves coordination and increases muscular power.

Cause and effect - When something happens that makes something else happen.

Cognition - Refers to the mental processes involved in acquiring knowledge and understanding. These processes include knowing, thinking, remembering, problem solving and judging.

Collaborative play - Refers to play that involves sharing, following rules, taking turns, compromising and negotiating.

Coordination - The ability to use different parts of the body together, smoothly and efficiently. Good coordination can protect children from falling and injuries. These skills are needed for participation in everyday tasks as well as active participation in playgrounds and sports.

Core strength - Stabilises and controls your abdominal muscles, back muscles and the muscles around the pelvis, which all influences the legs and upper body.

Creativity - The use of imagination or original ideas to create something.

Fine motor skills - Involves the use of the small muscles in the hands.

Gross motor skills - Involves the use of the large muscles of the body.

Imagination - The ability to produce and simulate novel objects, people and ideas in the mind without any immediate input of the senses.

Proprioception - Awareness of position and movement of the body.

Self-regulation - The ability to manage and understand behaviour, reactions and feelings to what is happening around you.

Sensory awareness - The direct focus on specific sensory aspect/s of the body or the outer/inner environment.

Sensory exploration - The stimulation of one's senses: touch, smell, taste, movement, balance, sight and hearing.

Sensory sensitive - Shows a strong response to stimuli of weak intensity.

Socialise - Practice taking turns, team building and collaborative play.

TGSI - Tactile ground surface indicators. A tactile ground surface to assist pedestrians who are visually impaired. Often found on footpaths, stairs and train station platforms.

Vestibular - Awareness of balance and spatial orientation in order to coordinate movement with balance.

Acknowledgement of Country

Monash Council acknowledges the Traditional Owners of this land, the Wurundjeri Woi Wurrung and Bunurong People, and recognises their continuing connection to the land and waterways. We pay our respects to their Elders past, present and emerging and extend this to all Aboriginal and Torres Strait Islander People.

Guidelines

Thank you for choosing to use an Access Key for Westerfield Drive Playspace. This customised accessibility guide provides convenient information. Access Keys are universally designed and suitable for all people, regardless of ability.

For your Access Key to be successful, we recommend you follow these guidelines:

- Access Keys are available online to help you prepare for your visit in advance
- Access Keys should be read and shared in an environment free of distractions
- Access Keys can be read independently or shared with a friend, family member, carer or support worker to prepare for the visit
- If sharing the Access Key with participant, help participant comprehend key points, consistently monitoring for level of understanding
- If sharing the Access Key with participant, contextualised photographs can be used to summarise information and experiences
- If using the Access Key as a reflective tool, make sure to enjoy the pivotal link between experience and recall after the visit has taken place
- Once the visit has taken place, revisit the Access Key to celebrate your success
- Accessibility information is located on page [26](#)
- Safety information is located on page [27](#)
- Download the Access Key in its entirety - 28 pages in total.



**Access
Ability
Australia**

Access Keys are designed and developed by AccessAbilityAustralia.

To view the full range of free Access Keys available, go to [AAA Library](#).

For Access Keys in Braille or audio, please [Contact Us](#).

Please complete our [short feedback](#) form to ensure continuous improvement.

© Access Ability Australia, All Rights Reserved. 2023 DISCLAIMER: All materials have been compiled from information available at time of production. They are not intended to replace professional advice including; but not limited to, access audits. All necessary care has been taken to design and produce Work(s). All measurements provided are within an approximate range. Full implementation guidelines are supplied in accordance with Work(s) in its entirety. You acknowledge and agree that you are using all services and facilities provided by Access Ability Australia at your own risk and you agree to defend, indemnify, save and hold Access Ability Australia harmless from any and all demands, liabilities, costs, losses and claims, howsoever suffered, including but not limited to legal fees that may arise directly or indirectly from any service provided or agreed to be provided by Access Ability Australia. You agree that this indemnification extends to all aspects of the Work(s), including but not limited to implementation and usage. Access Ability Australia are indemnified of all claims, liability, and expenses that may arise from use of Work(s) as per usage and acceptance of these terms and conditions. This Access Key is not to be altered by any parties without express permission of Access Ability Australia.



Did You Know?

- Westerfield Drive Playspace is proudly owned and operated by Monash Council.
- View [Monash Health and Wellbeing Plan](#).
- Westerfield Drive Playspace is a fun and engaging space that aims to enhance family and social recreational activities for people of all abilities.
- The playspace includes:
 - » Spaces for children and families to sit, relax or enjoy a picnic
 - » Sensory trails featuring textured pathways, bamboo art poles, a shiny bluebird sculpture, an insect hotel, and shrubs, plants and groundcovers of different texture, smell and colour
 - » Wildlife garden and rain garden
 - » Interactive play panels
 - » Musical play equipment, including tyre bouncers and 8-key marimba
 - » Water pump and log channel
 - » Play equipment including double swings, an in-ground trampoline and junior basket swing
 - » A junior multi-play unit with shop front and slide
 - » A village green featuring an open lawn and decorative mural.

- Westerfield Drive Playspace includes a community garden which is managed by the Notting Hill Neighbourhood House next door.
- The Westerfield Drive Pocket Park is supported by the Victorian Government through the Suburban Parks Program.
- To provide feedback on Westerfield Drive Playspace, please contact Monash Council on 9518 3555 or email mail@monash.vic.gov.au

Sensory Play

The renewal of this playspace in 2022 includes many sensory elements. Sensory play has benefits for all children, particularly those with additional needs. Sight, smell, sound, touch and taste help children's brains develop as children use their senses to learn about the world around them.

Sensory play helps develop fine and gross motor skills through activities such as splashing, climbing, throwing and shaping – skills that can be transferred to daily life skills.

Sensory play helps develop social skills when done with friends and gives children the ability to communicate, both verbally and non-verbally when they discover new sensations.

Sensory play that involves natural elements such as gardens, rocks and water can also have calming qualities for children who feel overwhelmed in busy environments such as playgrounds.



Getting There

The playspace is located on Westerfield Drive, Notting Hill (corner of Samada Street).

See [Google Maps](#).

Train

The closest station to Westerfield Drive Playspace is Glen Waverley Station. This station is 4.5km from the playspace.

Bus

The nearest bus stop is 480 metres from the playspace, on the corner of Westerfield Drive and Ferntree Gully Road. Bus routes 742 and 737 will get you there.

For further information on how to get to Westerfield Drive Playspace, please visit [Public Transport Victoria](#).



Parking

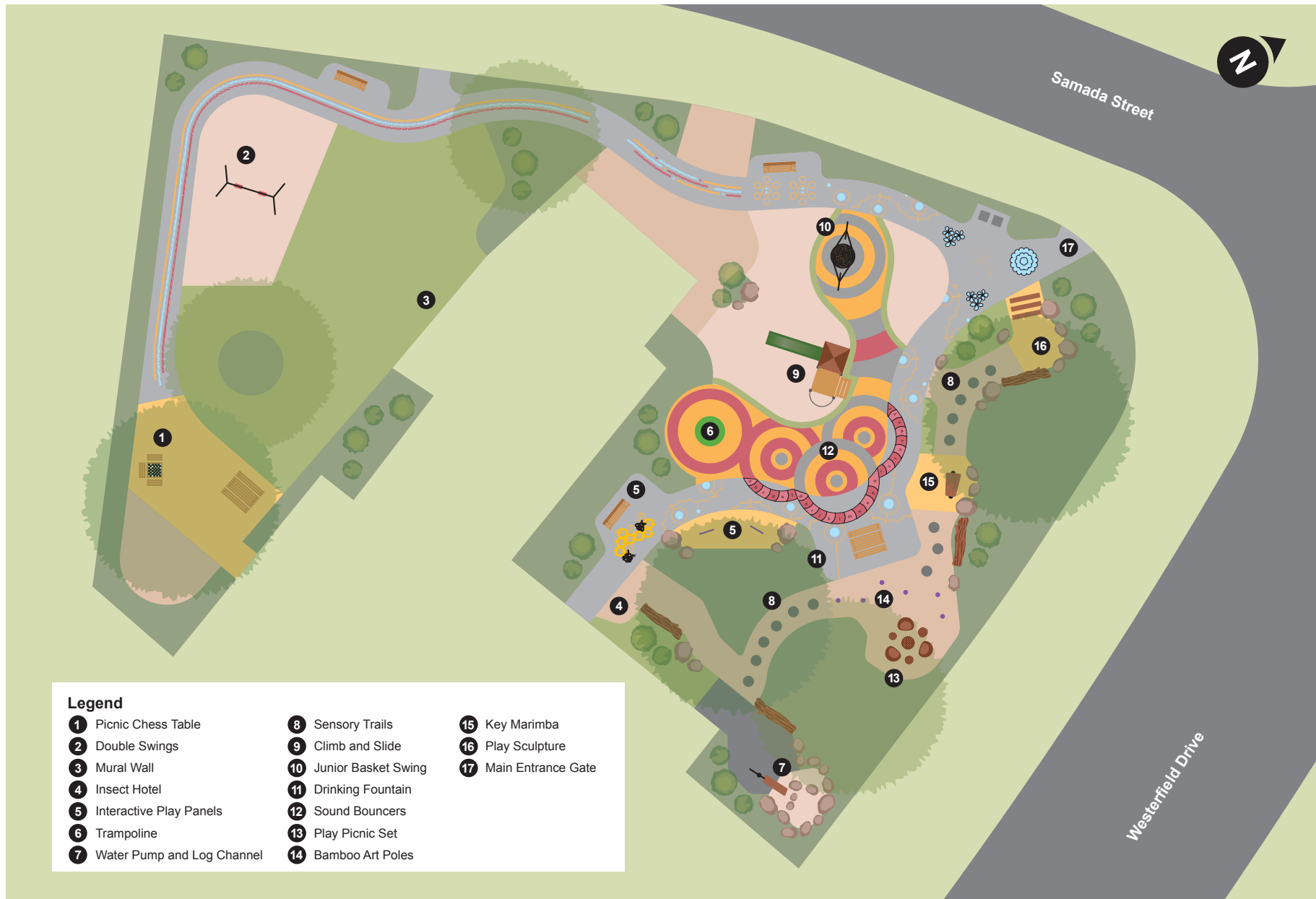
The most convenient parking is on Westerfield Drive, opposite the playspace.

There is also parking at the front of the shops next to Notting Hill Neighbourhood House.

Parking has no restrictions.



Map



Playspace Entry

There are two convenient access points.

Main Entry (Butterfly Iron Gate)

Location

Corner of Westerfield Drive and Samada Street.

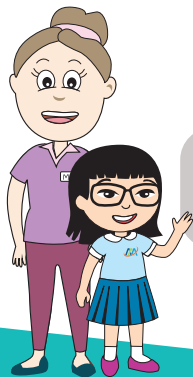
Entry is through a manual latch swing gate, opening outward with a clearance of 1190mm. Latch height 1430mm AFFL.

Secondary Entry (into the village green)

Location

Samada Street.

Entry is through a manual gate, opening inward with a clearance of 1160mm.



Parents and carers to supervise at all times.

SENSORY GUIDE



Feel

Shared personal space
Weather



Sounds

Bell (butterfly iron gate)
Birds
Children playing
Gate latch



Sounds

Musical play equipment
Nature
People
Traffic



Sights

Flying insects
Glare | Nature
People
Play equipment



Smells

Nature
Sunscreen
Tanbark

Toilets

There is one public toilet available at the Notting Hill Neighbourhood House, next to Westerfield Drive Playspace.

This is available for visitors of the playspace Monday - Friday, 10am - 3pm.

Location

1. Enter the main entry doors to Notting Hill Neighbourhood House on Westerfield Drive. Entry is through manual doors, opening outward with a clearance of 800mm. These can be opened to double doors with a clearance of 1630mm.
2. The toilets are straight ahead of the Neighbourhood House entry doors.

Includes:

- One unisex, accessible toilet with artificial lighting
- Manual door opening inward. Door clearance of 865mm. Twist lock at 1000mm AFFL
- Cubicle space 3050mm x 2320mm



- Grab bars to the right and behind toilet
- Toilet height 450mm AFFL with right hand transfer
- Sink height 770mm AFFL with lever tap 910mm AFFL
- Baby change area.

Separate male and female toilets.

When using these toilets, please be considerate of any community groups that may be using the Neighbourhood House at the time.

There are no available public toilets outside the hours of Monday - Friday, 10am - 3pm. For closest public toilets, please refer to the [National Public Toilet Map](#).

SENSORY GUIDE



Feel

Heating/Cooling



Sounds

Fan (male and female toilets)
Hand dryer
Toilet flushing
Water running



Sights

Bright lights
Mirror/Reflection



Smells

Air freshener
Bathroom smells
Disinfectants



Playground

The sensory trail has been carefully designed to stimulate a wide variety of sensory experiences, while also offering a tranquil place to relax and enjoy the natural elements of the playspace.

Location

1. Enter through the main entry gate.
2. Turn left onto the sensory trail.

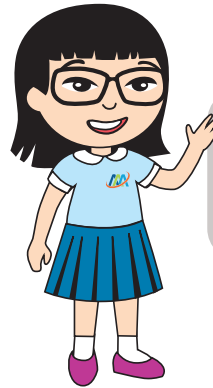
Includes:

- Pathways with different textures
- Bamboo art poles
- A shiny fairy-wren sculpture
- Insect hotel, micro habitat attraction.
Watching insects take up residence in their hotel.
- Horizontal logs for parents and carers to sit while supervising their children. These logs also showcase miniature insects and give children opportunity to practise balancing
- Shrubs, plants and groundcovers.

The plants along the sensory trail add beautiful colour and smell to this relaxing space.

This includes plants that may:

- Feel silky and have a pleasant smell
- Attract bees, butterflies and other insects
- Have silver-grey foliage and tiny yellow flowers.



See if you can find some decorative bees and insects on some of these logs.



SENSORY GUIDE



Feel

Shared personal space
Uneven ground surface
Varied ground surface
Weather



Sounds

Birds
Children playing
Insects
Musical play equipment



Sounds

People
Traffic
Water running
(water pump and log channel)



Sights

Flying insects
Glare
Nature



Smells

Plants
Sunscreen
Tanbark

Westerfield Drive Playspace features two garden areas.

Gardens for Wildlife

Location

Within the sensory trail, next to the children's picnic set.

It features:

- Plants that attract birds and insects
- Interpretive signage 'Homes for Wildlife' and 'Native Bee Home' will help visitors of all ages discover more about plants, insects and animals in the area.
- In-ground plants scattered throughout the garden.
- Mosaic sculpture of a superb fairy-wren as an educational awareness and bird sighting tool. Fairy-wrens are often seen in habitat types where suitable dense cover and low shrubs occur. They are common in urban parks and gardens.

Rain Garden

Location

Next to the water pump and log channel, near the end of the sensory trail.

It features passive irrigation from the water pumped into the log channel.



SENSORY GUIDE



Feel

Shared personal space
Uneven ground surface
Varied ground surface
Wet ground surface
Weather



Sounds

Birds
Flying insects
Musical play equipment
People



Sounds

Water running



Sights

Birds
Flying insects
Glare
Nature



Smells

Nature
Sunscreen
Tanbark

There are two sets of interactive play panels.

Flower Faces

Location

1. Enter through the main entry gate.
2. Proceed straight ahead, down the accessible pathway.
3. Proceed past the picnic setting.
4. Flower faces are on the left.

Children can put their face through the hole in the middle of the colourful flowers.

Ladybird Illusion (pictured)

Location

Past the flower faces and to the right of the accessible pathway.

The ladybird illusion is operated by spinning the black and white disc in the centre of the flower by hand. Watch the disc spin for 30 seconds before looking at the attached lady bird on the side. The ladybird appears to change size.

Please stop using this piece of equipment if the visual illusion causes any discomfort.



SENSORY GUIDE



Feel

Change in ground surface
Shared personal space
Uneven ground surface
(flower faces)
Weather



Sounds

Birds
Children playing
Musical play equipment
People | Traffic
Water running



Sights

Flying insects
Glare
Nature
Visual illusion
(ladybird)



Smells

Nature
Sunscreen
Tanbark

Tyre bouncers and an 8-key marimba are part of the sensory experience for children visiting Westerfield Drive Playspace.

Tyre Bouncers

Location

1. Enter through the main entry gate.
2. Proceed straight ahead along the accessible pathway.
3. The tyre bouncers are on the right.

Each tyre has a height of 170mm AFFL. There are three tyre bouncers. Each one makes a different sound: accordion, train or bird. Make the sounds by jumping or bouncing on top of each tyre.

8-Key Marimba

Location

1. Enter through the main entry gate.
2. Proceed straight along the accessible pathway.
3. The 8-key marimba is past the first set of concrete stepping stones, on the left.

Metal mallets are attached to the marimba, which

children use to bang the marimba to make musical sounds.

There is room underneath the marimba for a wheelchair.



SENSORY GUIDE



Feel

Shared personal space
Uneven ground surface
Varied ground surface
Weather



Sounds

Birds
Children playing
Musical play equipment
People
Traffic



Sounds

Water running



Sights

Flying insects
Glare
Nature



Smells

Nature
Sunscreen
Tanbark

Water Pump and Log Channel

Playground

Children can engage in water play with the water pump and log channel at Westerfield Drive Playspace.

The water pump will be available for use year-round.

Location

1. Enter through the main entry gate.
2. Turn left onto the sensory trail.
3. Follow this trail to the end.



SENSORY GUIDE



Feel

Being splashed
Cool water
Shared personal space
Uneven ground surface



Feel

Weather
Wet ground surface



Sounds

Birds
Musical play equipment
People | Splashing
Water running



Sights

Flying insects
Glare
Nature



Smells

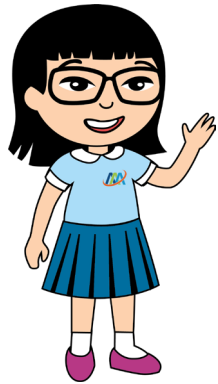
Nature
Sunscreen
Tanbark

In-ground Trampoline

There is one circular in-ground trampoline at Westerfield Drive Playspace.

Location

1. Enter the main entry gate.
2. Proceed straight ahead down the accessible pathway.
3. Proceed past the tyre bouncers.
4. Trampoline is on the right.



Stay Safe:

- Recommended age: 2-12 years
- Somersaults are not recommended
- One user on the trampoline at a time.

SENSORY GUIDE



Feel

Increased body temperature
Increased heart rate
Weather
Weightlessness



Sounds

Birds
Musical play equipment
People
Water running
Weather



Sights

Flying insects
Glare
Nature



Smells

Nature
Sunscreen
Tanbark

Junior Basket Swing

The junior basket swing is a piece of play equipment that supports inclusive play for users of all abilities.

Location

1. Enter through the main entry gates.
2. Turn right down the accessible pathway.
3. The junior basket swing is on the left.

Users operate the swing by pushing themselves in various directions while inside the swing, or by a parent or carer pushing from the outside.

The basket swing height is 610mm AFFL.



Stay Safe:

- Do not walk in front or behind the moving swing
- Do not swing faster or higher than what a user is comfortable with.



SENSORY GUIDE



Feel

Chain link handles
Increased body temperature
Increased heart rate



Feel

Sensation of flying
Weather
Weightlessness



Sounds

Birds
Musical play equipment
People
Water running
Weather



Sights

Flying insects
Glare
Nature



Smells

Nature
Sunscreen
Tanbark

Junior Multi-Play Unit

The junior multi-play unit features a two-level climbing structure with challenging entry points including steps, steel stirrups and a vertical hoop climber.

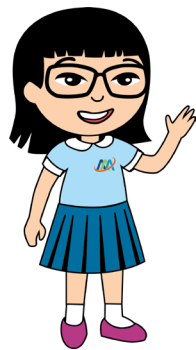
Location

Opposite the junior basket swing.

This structure incorporates multiple play components, giving users a great variety of physical and sensory play experiences.

Other features include:

- Shop counter on ground level
- Noughts and crosses game on level one
- Steering wheel on level two
- Firefighter's pole on level two
- 2.5 metre fibreglass safety slide on level two.



Stay Safe:

- Do not walk or run up or down the slide.

SENSORY GUIDE



Feel

Change in ground surface
Heights
Increased body temp
Increased heart rate



Feel

Shared personal space
Stomach drop
Weather



Sounds

Birds | Children playing
People | Traffic
Musical play equipment
Water running
Weather



Sights

Flying insects
Glare
Nature



Smells

Nature
Sunscreen
Tanbark
Timber



Children's Chess Table Set

Location

1. Enter the main entry gate.
2. Turn left onto the sensory trail.
3. Table set is past the bamboo poles.

Includes:

- A round, carved timber table with a chessboard pattern on top
- Three hardwood timber stools with no back or armrests
- Three carved, timber armchairs with backs, no armrests.



Picnic Set

Location

1. Enter the main entry gate.
2. Go straight down the accessible pathway.
3. Picnic set is on the left, near the bamboo art poles.

Includes:

- A picnic table and attached bench seating with no back or armrests
- Room for a wheelchair at both ends of the tables.

SENSORY GUIDE



Feel

Shared personal space
Uneven ground surface
Varied ground surface
Weather



Sounds

Birds | Children playing
Musical play equipment
People | Traffic
Water running



Sights

Flying insects
Glare
Nature



Smells

Nature
Sunscreen
Tanbark

Bench Seat

Location one

1. Enter main entry gate.
2. Go straight along accessible pathway.
3. Bench seat is on the right near the interactive play panels.

Location two

1. Enter main entry gate and turn right.
2. Bench is on the right, before entry gate to the village green.

Both bench seats have back and armrests.



SENSORY GUIDE



Feel

Shared personal space
Uneven ground surface
Varied ground surface
Weather



Sounds

Birds | Children playing
Musical play equipment
People | Traffic
Water running



Sights

Flying insects
Glare
Nature



Smells

Nature
Sunscreen
Tanbark



LEWAR
&
ASHIKU

Village Green

The village green is a grassed area, available for casual play, picnics and quiet relaxation.

Location

There is an entry gate to the village green from the external footpath on Samada Street (secondary entrance to playspace).

To enter the village green from inside the playspace:

1. Enter the main entry gate.
2. Turn right.
3. Enter the internal gate into the village green area. This is a manual gate, opening inward with a clearance of 1160mm.

Includes:

- Open lawn
- Decorative mural
- Seating options
- Double swing set
- Trees for shade.



SENSORY GUIDE



Feel

Change in ground surface
Shared personal space
Weather



Sounds

Children playing
People



Sights

Flying insects
Glare
Nature



Smells

Food/Drink
Nature
Sunscreen
Tanbark

Double Swings

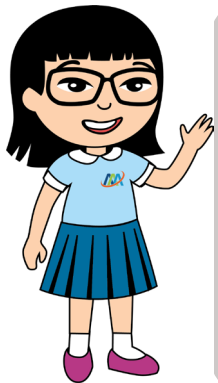
Village Green

There is one set of swings in the village green at Westerfield Drive Playspace.

Location

Within the village green.

This is a double frame swing set with one sling seat and one toddler seat.



Stay Safe:

- Make sure to stand at the side of the swings while waiting your turn
- Do not walk in front or behind moving swings
- Do not swing faster or higher than what a user is comfortable with.

SENSORY GUIDE



Feel

Change in ground surface
Increased body temperature
Increased heart rate
Shared personal space



Feel

Sensation of flying
Weather
Weightlessness



Sounds

Birds
People
Weather



Sights

Flying insects
Glare
Nature



Smells

Nature
Sunscreen
Tanbark

Picnic Chess Table Set

Location

1. Enter the main entry gate.
2. Turn right and follow the accessible pathway to the village green entry.
3. Enter through the internal village green gateway and continue to follow the path, past the double swing set.
4. Picnic chess table is at the end of this pathway.

There is an allocated space for a wheelchair at the end of the table.

Picnic Setting

Location

Opposite the picnic chess set.

This picnic setting includes a picnic table and attached bench seating with no back or armrests.

There is room for a wheelchair at both ends of the table.

Bench Seat

Location

Near the swing set.

This bench seats has back and armrests.

Within the village green, there is also a lawn area to spread out picnic rugs.



SENSORY GUIDE



Feel

Shared personal space
Uneven ground surface
Varied ground surface
Weather



Sounds

Birds
Children playing
Musical play equipment
People
Traffic



Sights

Flying insects
Glare
Nature



Smells

Nature
Sunscreen
Tanbark



Health and Wellbeing Benefits

Being involved in regular moderate physical activity can provide numerous advantages. Play is helpful for sensory-seeking or sensory sensitive children to assist with self-regulation, focus and attention. Listed below are the associated health and wellbeing benefits of participating in play at Westerfield Drive Playspace.

Sensory Trails and Gardens:

- Can be a calming space for anyone who may be feeling overwhelmed
- Helps children to make sense of the world around them by providing a range of experiences to stimulate the senses
- Helps to encourage imaginative play
- Improves physical fitness, health, mood and cognition.

Interactive Play Panels:

- Helps to improve sensory awareness and allows children to explore the world around them
- Helps to improve fine motor skills and coordination
- Helps children understand cause and effect
- Features sensory elements that include tactile, auditory and manipulative activities.

Tyre Bouncers and 8-Key Marimba:

- Helps to improve sensory awareness and encourages children to explore the world around them
- Helps to improve fine motor skills and coordination

- Features musical elements that help children understand cause and effect
- Features sensory elements that include tactile, auditory and manipulative activities
- Stimulates imagination and creativity.

Water Pump and Log Channel:

- Releases energy through waterplay, which can be invigorating, relaxing or calming
- Helps to stimulate creativity and imagination
- Helps children explore their world using their senses
- Helps to develop scientific concepts
- Helps to develop fine motor skills
- Encourages cooperation, teamwork and socialisation.

Double Swings and Junior Basket Swing:

- Helps to develop balance and core strength
- Helps to encourage taking turns and cooperative play
- Stimulates the vestibular sense which in turn promotes physical balance and coordination

- Can be soothing and calming with its smooth back-and-forth motion.

In-ground Trampoline:

- Provides vestibular and proprioceptive input, which helps develop gross motor coordination
- Helps improve balance
- Improves strength and fitness
- Encourages users to socialise and practise taking turns.

Junior Multi-play Unit:

- Helps to develop and improve proprioception
- Helps to develop balance and core strength
- Helps to develop gross motor skills
- Helps to encourage taking turns and cooperative play
- Features a steering wheel that provides an interactive and sensory experience for users and assists with fine motor skills and dramatic play.

Accessibility

Throughout:

- No accessible parking bays
- Pram ramps to external playspace footpath located on the corner of Westerfield Drive and Samada Street and on Westerfield Drive, in front of Notting Hill Neighbourhood House
- Clear path of travel from external footpath to playspace entry gates
- Terrain varies throughout the playspace and includes concrete, porous concrete, timber decking, soft mulch, soft fall play surface, tanbark, compacted granitic gravel, stone paving, timber sleepers and grass
- Accessible pathway throughout. Width 1500mm
- Bins located next to main access gate. Height 1160mm AFFL. Red bin for general waste, yellow bin for recyclables
- Drinking fountain near sensory garden with operating heights 850mm AFFL and 620mm AFFL (for water bottles)
- Spaces for wheelchair users to sit with friends
- Adequate space to park mobility aids and prams throughout
- Quiet area in village green to retreat from the noise of the main playspace
- Assistance animals welcome. Please keep on lead
- Use the National Relay Service to contact Monash Council on 9518 3555. Find the right contact number or access point for your NRS channel of choice at accesshub.gov.au/about-the-nrs. For help using the NRS, contact the NRS helpdesk accesshub.gov.au/about-the-nrs/nrs-helpdesk
- Interpreter service is available at Monash Council. Call 9518 3555.

Notting Hill Neighbourhood House:

- Toilets available Monday to Friday from 10am to 3pm
- Entry door with exit push button at 1000mm AFFL.

Seating:

- Picnic chess table height 600mm AFFL with knee clearance 570mm AFFL
- Picnic chess table sets with chair heights 260mm AFFL
- Children play picnic chess table height 370mm AFFL
- Children play picnic chess table set hardwood timber stools and armchairs with heights varying between 300mm and 370mm AFFL
- Village green picnic setting table height 770mm AFFL with knee clearance 730mm AFFL
- Playground picnic setting table height 720mm AFFL with knee clearance 680mm AFFL.

Gardens:

- Gardens for wildlife accessed over mulch
- Rain garden accessed over stone paving.

Interactive Play Panels:

- Flower faces with face hole heights 950mm AFFL (purple and red flower) and 870mm AFFL (black and purple flower)
- Ladybird illusion operating height 880mm AFFL.

Tyre Bouncers:

- Step-up heights 170mm AFFL
- Diameters 600mm.

8-Key Marimba:

- Height 670mm AFFL with graduated knee clearance
- Attached mallets with grab heights 600mm AFFL.

Water Pump and Log Channel:

- Water pump operating height 760mm AFFL.

Double Swings:

- Sling seat height 540mm AFFL, toddler seat height 480mm AFFL.

In-ground Trampoline:

- Diameter 1200mm.

Junior Basket Swing:

- Basket height 610mm AFFL
- Basket diameter 1000mm.

Junior Multi-Play Unit:

- Shop counter 660mm AFFL
- Steering wheel operating height 600mm AFFL.



Safety

Throughout:

- Surrounding fencing allows families and groups to safely utilise the space. Parent and carers can enjoy the space together with their children with less risk of children running onto surrounding roads or other hazards
- Overhead hazards include trees — some with low-lying branches — and play equipment
- Bins placed to the side of accessible pathway

- Children must be actively supervised at all times
- Smoking and alcohol are not permitted within the playspace
- In the event of an emergency, please call 000.

Gardens:

- Wet surface on rain garden
- Uneven sharp rocks surround rain garden.

Double Swings:

- Frame height 2.5 metres.

Junior Multi-Play Unit:

- Steps with handrails both sides
- Structure not fully enclosed
- Slide exit with soft fall matting.



WESTERFIELD DRIVE PLAYSPACE

Westerfield Drive, Notting Hill

Phone: 9518 3555 (Monash Council)

Email: mail@monash.vic.gov.au