



Access Key

A customised accessibility guide

182 Kidds Road
Doveton, Victoria
Phone: 03 9706 9944



Contents

Guidelines	3
Communication Board	4
Did You Know?	5
Getting There	6
Welcome	7
Parking	8
Entry and Admission	9
Staff	10
Toilets	11
Free Range Animals	12
Rest Areas	13
Cafe	14
Picnic and BBQ Area	15
Playground	16
Animal Nursery	17
Dairy	18
Pony Rides	19
Tractor Rides	20
Accessibility	21
Safety	22

Glossary

AFFL:	Above finished floor level.
Balance:	an even distribution of weight enabling someone to remain steady.
Change in body position:	when a person changes posture or position, for example sitting to standing.
Change in ground surface:	soil, gravel, concrete, carpet, tiles, grass, mulch, floor boards.
Code Red Days:	Code Red days are very rare and very serious. These are the worst conditions for a bushfire or grassfire.
Nature:	Environment, plants.
Slightly varied ground gradient:	Hilly, sloped, bumpy, uneven ground.




Guidelines



Thank you for choosing to use an Access Key for Myuna Farm. This customised accessibility guide provides convenient information. Access Keys are universally designed and suitable for all people, regardless of ability.

- For your Access Key to be successful, we recommend you follow these guidelines.
- Access Keys are available online to help you prepare for your visit in advance.
- Access Keys should be read and shared in an environment free of distractions.
- Access Keys can be read independently or shared with a friend, family member, carer or support worker to prepare for the visit.
- If sharing the Access Key with participant, help participant comprehend key points, consistently monitoring for level of understanding.
- If sharing the Access Key with participant, contextualised photographs can be used to summarise information and experiences.
- If using the Access Key as a reflective tool, make sure to enjoy the pivotal link between experience and recall after the visit has taken place.
- Once the visit has taken place, revisit the Access Key to celebrate success.
- Accessibility information is located on page [21](#).
- Safety information is located on page [22](#).
- Download Access Key in its entirety - 22 pages in total.

	Access Ability Australia	<p>Access Keys are designed and developed by Access Ability Australia. To view the full range of free Access Keys available, go to AAA Library. For Access Keys in Braille or audio, please Contact Us. Please complete our short feedback form to help us ensure continuous improvement.</p>
--	---	---



© Access Ability Australia, All Rights Reserved. 2021 DISCLAIMER: All materials have been compiled from information available at time of production. They are not intended to replace professional advice including; but not limited to, access audits. All necessary care has been taken to design and produce Work(s). All measurements provided are within an approximate range. Full implementation guidelines are supplied in accordance with Work(s) in its entirety. You acknowledge and agree that you are using all services and facilities provided by Access Ability Australia at your own risk and you agree to defend, indemnify, save and hold Access Ability Australia harmless from any and all demands, liabilities, costs, losses and claims, howsoever suffered, including but not limited to legal fees that may arise directly or indirectly from any service provided or agreed to be provided by Access Ability Australia. You agree that this indemnification extends to all aspects of the Work(s), including but not limited to implementation and usage. Access Ability Australia are indemnified of all claims, liability, and expenses that may arise from use of Work(s) as per usage and acceptance of these terms and conditions. This Access Key is not to be altered by any parties without express permission of Access Ability Australia.

COMMUNICATION BOARD

Take your Myuna Farm Communication Board with you to ensure confident communication.
September 2023 V2.0

How much?



Tickets



Accessible Toilet



Toilet



Rest Area



Animals



Playground



Train Ride



Cafe'



Time



Something is Wrong



First Aid



I Need Help



Write it Down



Phone



Taxi



Bus



Wi-Fi



Yes

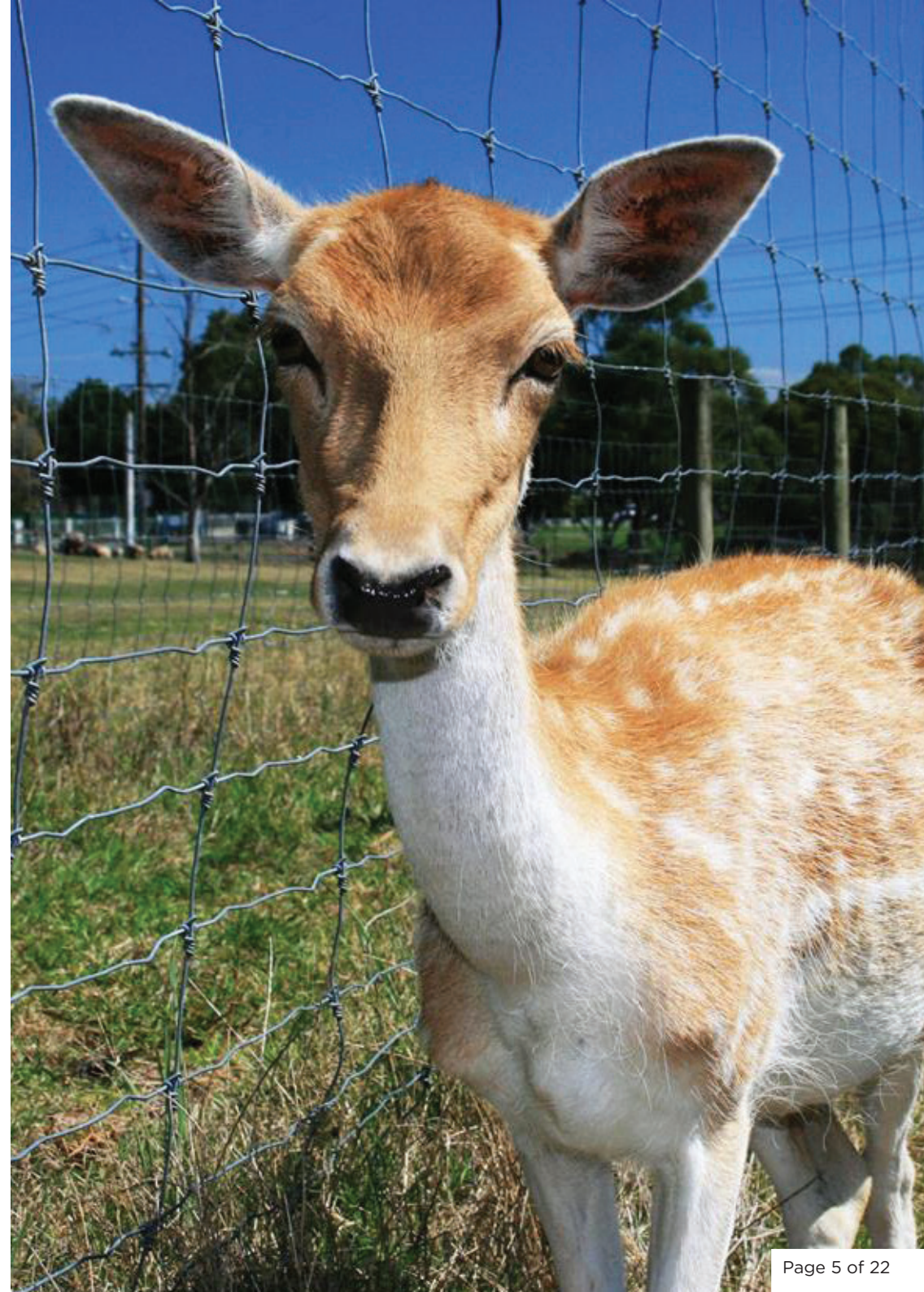


No



Did You Know?

- Myuna Farm is closed on all Code Red days and Christmas Day.
- Mention Myuna Farm's Access Key when purchasing tickets for a free additional animal food bag.
- Party booking are available [here](#).
- Myuna Farm has free public barbeques and picnic areas that you can use.
- Doveton Show is held at Myuna Farm in September every year.
- Free Wi-Fi is available in the café, animal nursery and central picnic area.
- Leave your feedback [here](#).
- Find Myuna Farm on [Facebook](#) and [Instagram](#).



Getting There

Myuna Farm is located at 182 Kidds Road, Doveton.

See Google Maps reference [here](#).

The nearest bus stop is located out the front of the farm at the intersection of Betula Street and Kidds Road.

For further information on how to get to Myuna Farm, please visit [Public Transport Victoria](#).



Welcome

We are open 10am - 4pm every day of the year except Christmas Day!



Parking

The Myuna Farm carpark is located at the end of the driveway, on both the left and right-hand sides.

There are:

- Four accessible/disabled parking bays on the left-hand side, approximately 20 meters away from the entrance
- Bus parking is on the left-hand side of the carpark
- General parking is throughout the entire carpark

There are no time restrictions or fees.

There is a convenient drop-off point in front of the farm office. This is for dropping off only, no parking.





Entry and Admission

Entry to Myuna Farm is through the front farm office. It is located at the end of the driveway.

Enter this area through the open set of wooden farm doors. There are no steps.

Admission and ride tickets can be purchased at the ticket window. This is where you get animal food to feed paddock animals.

Cash or EFTPOS is accepted. Myuna Farm does not accept American Express.

If you have a Companion card or a concession card, please present it here.

There is an undercover area located at the front of the office entry.

The Myuna Farm gift shop is located here. You can purchase items such as local honey, handmade soaps, Myuna Farm hats and animal magnets.

Myuna Farm's first aid room is located here.



Sensory Guide


Feel
 Change in ground surface
 Shared personal space
 Weather


Sounds
 Animals
 Announcements
 Keyboard clicks
 Mouse clicks
 People
 Phones
 Register


Sights
 Animal food
 People


Smells
 Air Freshner
 Animal food
 Animals
 Nature



Staff

Myuna Farm staff wear a uniform that consists of blue or tan pants and a blue shirt, with work boots.

A navy-blue jacket may also be worn when it is cold.

Blue or tan shorts may be worn when it is hot.

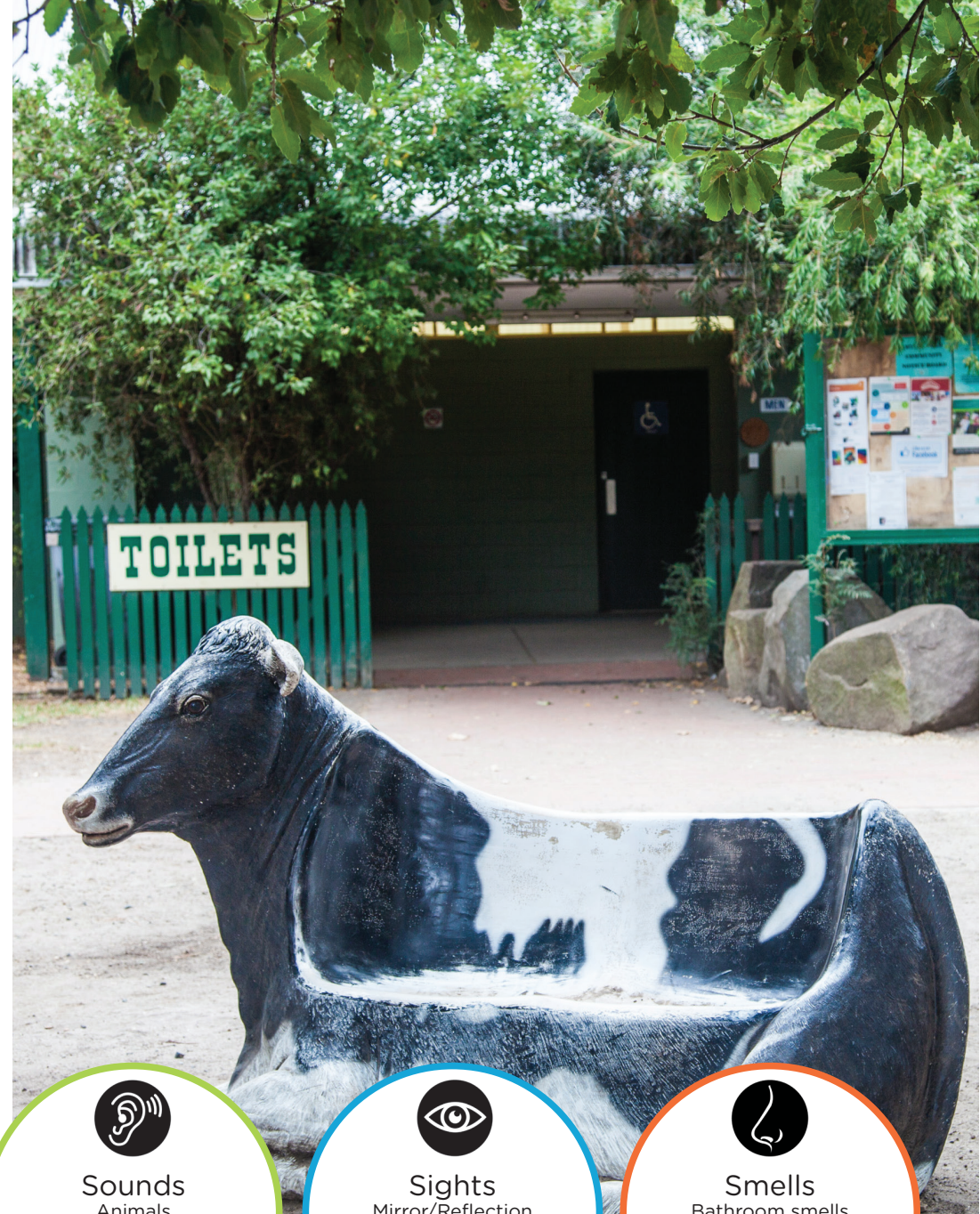
Toilets

There is one set of toilets.

They are located on the left-hand side of the pathway after the entry to Myuna Farm.

Includes:

- One unisex, accessible toilet.
- Manual door opening inward. Door clearance of 850mm. Twist lock at 1190mm AFFL.
- Cubicle space 2050mm x 2900mm.
- Grab bars to the left and behind toilet.
- Toilet height at 440mm AFFL. Left hand transfer.
- Sink height at 800mm AFFL with lever tap 890mm AFFL. Sinks in shared common area outside toilets.
- Separate baby change area.
- Separate male and female toilets.



Feel

Change in ground surface
Shared personal space



Sounds

Animals
Hand dryers
People
Toilets flushing
Water running



Sights

Mirror/Reflection
People



Smells

Bathroom smells
Disinfectants

Free Range Animals

At Myuna Farm, some animals roam free.

These animals may include chickens, ducks and turkeys.

These animals may move quickly and make noises.



Rest Areas

There are several different areas available for visitors to rest and relax.

For a quiet inside space, visit the hay bales in the Dairy.

For a quiet outside space, visit the picnic area near the Big Bin.





Café

Myuna Farm Café and Catering is located at the entrance to the farm, only meters from the play-ground.

The café is open seven days a week.

Entry to the café is via an open doorway 1900mm wide.

There are outside tables and chairs available.

There is a large print menu displayed on the interior café wall.

Food is also displayed in a low height glass cabinet.

For further information and menu options, visit our [website](#).



Feel
Shared personal space



Sounds
Announcements
Café equipment
Cash register
People



Sights
People



Smells
Food/Drink

Picnic and BBQ Area

There are picnic tables and free barbeques at Myuna Farm for visitors to enjoy.

They are located inside the farm, near the main entry area.

There are picnic tables and chairs as well as a designated accessible picnic area.

Cleaned gas barbeques are available for all visitors.



Sensory Guide



Feel

Change in ground surface
Shared personal space
Weather



Sounds

Animals
Announcements
BBQ cooking
Children playing
People



Sights

Animals



Smells

Barbeques cooking
Food
Nature

Playground



Sensory Guide



Feel

- Balance
- Change in body position
- Change in ground surface
- Shared personal space
- Weather



Sounds

- Animals
- Announcements
- Children playing
- People



Sights

- Animals
- Moving playground equipment



Smells

- Barbeque cooking
- Food
- Nature

Animal Nursery

The animal nursery is an enclosed space with animal pens inside.

Entrances are wide and open, with no steps.

The animal nursery houses lots of different animals. There could be rabbits, guinea pigs, lambs, goat kids, reptiles and sometimes milking goats.

Entry to the rabbit and guinea pig pen is via a gate opening inward. It has a single step entry. Children must be accompanied by an adult in the rabbit pen.

Visitors can pat the animals in the animal nursery.

Please do not pick up or feed the animals in the nursery.

Reptiles such as snakes and lizards are in glass enclosures.



Sensory Guide



Feel

Change in ground surface
Shared personal space
Slightly varied ground gradient



Sounds

Animals
Announcements
Children playing
Echo
People



Sights

Animal enclosures
Animals
Dust
People
Sawdust ground cover
Straw



Smells

Animals
Dust
Nature
Sawdust/Straw



Dairy

The dairy is an enclosed space next to the animal nursery.

Entrances are wide and open, with no steps. There is a wheelchair ramp to one entrance.

The dairy houses the milking goats and sometimes baby goat kids or lambs. The goat milking stand is also in the dairy.

Visitors can pat the animals in the dairy.

Please do not feed the animals in the dairy.

Every afternoon around 3:15pm, the farmers do a milking demonstration in the dairy. This involves putting a milking goat in the stand, and hand milking the goat into a bucket.

Sensory Guide



Feel

Balance
Change in body position
Helmet pressure
Shared personal space
Weather



Sounds

Animals
Children playing
Horn
People
Train engine



Sights

Animals
Dust



Smells

Animals
Dust
Nature



Pony Rides

Pony rides operate between 11am and 3pm, Monday to Sunday (except public holidays, and when the temperature is over 33 degrees Celsius).

A staff member will assist children with pony rides.

Pony ride tickets can be purchased at the farm office. A height chart is available here, and at the pony rides, to indicate the maximum rider height that day.

Pony rides are located behind the playground.

Sensory Guide


Feel
 Balance
 Change in body position
 Helmet pressure
 Shared personal space
 Weather


Sounds
 Animals
 Children playing
 Horn
 People
 Train engine


Sights
 Animals
 Dust


Smells
 Animals
 Dust
 Nature

Tractor Rides

Tractor rides (also called train rides) operate between 11am and 3pm Hourly during weekdays if not busy, every day.

On weekdays, the tractor will run every hour on the hour (11am, 12pm, 1pm, 2pm and 3pm).

On weekends, the tractor will run approximately every 15 minutes.

Tractor rides tickets can be purchased from the farm office.

The tractor ride runs for 15 minutes and goes at a maximum speed of 10 kilometres per hour.

There is a wheelchair train carriage available. Please organise this with staff at least 30 minutes before you require it.

Tractor rides are located between the Pioneer Shed and the Pavilion.



Sensory Guide



Feel

- Balance
- Bumpy surface
- Change in body position
- Shared personal space
- Weather



Sounds

- Animals
- Children playing
- Horn
- People
- Tractor engine



Sights

- Animals
- Animal enclosures
- Dust



Smells

- Dust
- Engine fumes
- Nature

Accessibility

- Ticket office counter 1180mm AFFL.
- Staff available to read information if required
- Pen and paper for exchanging information.
- Spaces for a person using a wheelchair to sit with friends throughout.
- Wide, clear internal and external walkways throughout.
- Outdoor picnic tables 650mm high, 780mm deep.
- Myuna Farm Cafe and Catering customer service counter 900mm AFFL.
- Myuna Farm Café and Catering outdoor chairs with backs and armrests.
- Consideration for special dietary requirements can be made available. Contact myunafarmcafe@gmail.com.
- Feed trail with viewing areas that provide good visibility.
- Wayfinding signage using simple language.
- Carers are free with a Companion card.
- A taped phone message about services and facilities.
- Myuna Farm is Relay Service Friendly. Use the National Relay Service to contact Myuna Farm on (03) 9706 9944. Find the right contact number or access point for your NRS channel of choice at accesshub.gov.au/about-the-nrs. For help using the NRS, contact the NRS helpdesk accesshub.gov.au/about-the-nrs/nrs-helpdesk
- Assistance animals welcome. They must remain on designated paths and be restrained by a harness or leash. We request that they do not go near the Kangaroo paddock.



Safety

- Terrain is varied from flat, paved, gravelled or grassland. Some terrain may be slightly uneven.
- Some pathways with overhead hanging tree branches.
- A First Aid room is located in the main entry area. Please see staff for assistance.
- Epi Pens are always kept on-site.
- Defibrillator machine is located in the front office next to the first aid room.
- Entry to main ticket area from farm with slight raised gradient.
- Children must be supervised at all times.
- Myuna Farm prides itself on its clean and sustainable environment. All visitors are to place rubbish in the bins provided or take their rubbish home.
- All staff at Myuna Farm have current Working with Children Checks.
- The City of Casey provide Programs and Services under a Child Safe Policy.
- In the event of an emergency, staff will help and direct visitors. If there is to be an evacuation, visitors will be directed to the nearest exit and designated assembly area.