

Access key

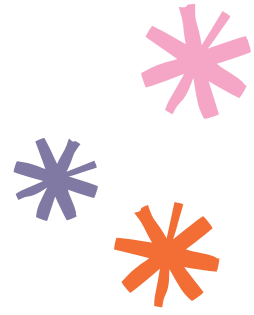
A customised accessibility guide

BENDIGO EASTER FESTIVAL

MARCH 29 - APRIL 7



Contents and Glossary



Guidelines	3
Communication Board	4
Did You Know?	5
Accessibility Features	6
Accessibility Map	7
Event Map	8
Getting There	9
Parking	10
Staff	11
Changing Places	12
Marveloo	13
Amenities	14
Food and Drink	15
Program of 4 Day Event	16
Rosalind Park	17
Easter Egg Hunt	18
Carnival Central	19
CFA Kids Amusement Rides	20
Rotary Market	21
Awakening of the Dragon	22
O'Brien Electrical & AC	23
Torchlight Procession	24
Sherridon Homes Gala Parade	25
Fireworks	26
Safety	27
Contact Us	27



AFFL	Above Finished Floor Level
CBD	Central Business District
HSSH	Hand Held Shower Hose
TGSI	Tactile Ground Surface Indicators. A tactile ground surface to assist pedestrians who are visually impaired. Often found on footpaths, stairs and train station platforms.
VA	Vision Australia



Guidelines

Thank you for choosing to use an Access Key for the 2024 Bendigo Easter Festival. This customised accessibility guide provides convenient information about accessing this event. Access Keys are universally designed and suitable for all people, regardless of ability.

For your Access Key to be successful, we recommend you follow these guidelines:

- Access Keys are available online to help you prepare for your visit in advance.
- Access Keys to be read and shared in an environment free of distractions.
- Access Keys can be read independently or shared with a friend, family member, carer or support worker to prepare for the visit.
- If sharing the Access Key with participant, help the participant comprehend key points, consistently monitoring for level of understanding.
- If sharing the Access Key with participant, contextualised photographs can be used to summarise information and experiences.
- If using the Access Key as a reflective tool, make sure to enjoy the pivotal link between experience and recall after the visit has taken place.
- Once the visit has taken place, revisit the Access Key to celebrate success.
- Accessibility information is located on page [6](#).
- Safety information is located on page [26](#).
- Download Access Key in its entirety - 27 pages in total.



**Access
Ability
Australia**

Access Keys are designed and developed by [Access Ability Australia](#). To view the full range of free Access Keys available, go to [AAA Library](#).

For Access Keys in Braille or audio, please [Contact Us](#).

Please complete our [short feedback form](#) to help us ensure continuous improvement.

© Access Ability Australia, All Rights Reserved. 2024 DISCLAIMER: All materials have been compiled from information available at time of production. They are not intended to replace professional advice including; but not limited to, access audits. All necessary care has been taken to design and produce Work(s). All measurements provided are within an approximate range. Full implementation guidelines are supplied in accordance with Work(s) in its entirety. You acknowledge and agree that you are using all services and facilities provided by Access Ability Australia at your own risk and you agree to defend, indemnify, save and hold Access Ability Australia harmless from any and all demands, liabilities, costs, losses and claims, howsoever suffered, including but not limited to legal fees that may arise directly or indirectly from any service provided or agreed to be provided by Access Ability Australia. You agree that this indemnification extends to all aspects of the Work(s), including but not limited to implementation and usage. Access Ability Australia are indemnified of all claims, liability, and expenses that may arise from use of Work(s) as per usage and acceptance of these terms and conditions. Access Ability Australia's resources/products are not to be altered by any parties without express permission of Access Ability Australia.

Toilet



Changing Places



I don't speak English



Quiet place



Question



Yes



No



Write it down



Recharge station



Map



I need help



I want to sit down



Something is wrong



Playground



Animals



Drinking fountain



Time



First aid



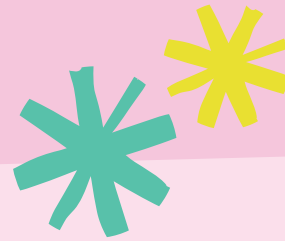
Security



Police



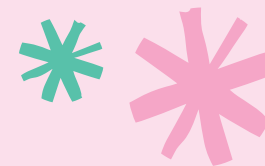
Did you know?



- The Bendigo Easter Festival is held throughout the Bendigo CBD. Key locations are Rosalind Park, Easter Fair Way (Bridge Street), Park Road, Dai Gum San, Bull Street, Sidney Myer Place, William Vahland Place and Mundy Street.
- The festival commences on Good Friday, March 29 and finishes on Easter Monday April 1.
- Commencing in 1871, the Bendigo Easter Festival is one of Australia's oldest ongoing community events.
- The Bendigo Easter Festival is a family-orientated community event.
- [Road closures](#) will be in place.
- Parking is limited - where possible please walk, ride or take public transport.
- Public transport will be available to the event throughout the weekend including trains and buses. Please check public transport schedules for any disruptions.
- Local taxi services available - Bendigo Taxis on 131 008 and 13CABS on 13 2227.
- Limited accessible car parking will be available. Please see map on [page 7](#) or visit our [website](#) to learn more.

- To see what's on at the Bendigo Easter Festival, download a [program of events](#).
- Bendigo Visitor Information Centre is located 51-67 Pall Mall, Bendigo and is open 7 days a week from 9am - 5pm. Phone (03) 5434 6060.
- An information tent will be located in the centre of Rosalind Park to provide festival information and directions.
- Wristbands will be available at the Bendigo Visitor Centre and the Information tent in Rosalind Park. These can be used to ensure your child and/or person in your care has the name and mobile number of their parent/guardian/carer with them at all times. This is very helpful for young children and other attendees who may not be able to verbalise these details, and makes for a quicker reunion.
- Follow us on [Facebook](#).
- For enquiries throughout the duration of the event, please message us via messenger on our event [Facebook](#) page or email bendigoeasterfestival@bendigo.vic.gov.au.
- In the event of extreme weather conditions, activities and events may be moved to a dry weather venue or cancelled.

- Vision Australia's (VA) Easter Egg Hunt tickets will be available from Thursday 16 February. Tickets can be purchased via the Bendigo Visitor Centre by visiting the [website](#) or calling 1800 813 153. Tickets can also be purchased in person at the Bendigo Visitor Centre, 51-67 Pall Mall, Bendigo.
- Please check your VA Easter Egg Hunt ticket carefully, participants will only be admitted to the session booked at the time of payment and must attend their relevant age group. Tickets may be displayed on a device (mobile phone/tablet).
- To provide feedback please see contact bendigoeasterfestival@bendigo.vic.gov.au.



Accessibility Features

The 2024 Bendigo Easter Festival welcomes patrons of all abilities, and the City of Greater Bendigo is keen to support a great event for all, by providing the following accessibility features.

- Changing Places and a Marveloo.
- Accessible toilets throughout the event.
- A-frame signage throughout to provide wayfinding to accessible toilets.
- Accessible parking.
- Designated signed accessible parade viewing. No bookings available. Refer to accessibility map on [page 7](#).
- Large print event maps throughout and at Bendigo Visitor Information Centre.
- Visual communication board at Information tent in Rosalind Park.
- Coliban Water trailer in Rosalind Park near the Sidney Myer Place Bridge. Don't forget to bring your drink bottle!
- Assistance animals permitted.
- Event information will be available from the information tent, located in the centre of Rosalind Park near the Rotunda. Our friendly staff at the Bendigo Visitor Information Centre in Pall Mall can help you with event information, as well as general information on visiting the Bendigo region.
- To avoid peak times and pedestrian congestion, a quieter time to participate in activities held in Rosalind Park is during the Bendigo Advertiser Gala Parade on Easter Sunday.
- For those seeking respite from the busy crowds, please visit the Lively Chill Out Zone located in Rosalind Park. For more information, please visit [Lively Chill Out Zone](#).
- Rosalind Park View Street access gate width 6.5 metres with 1500mm width between fixed bollards.
- Rosalind Park access bridges approximately 2300mm wide x 16.6 metres long with approximately 1300mm width between fixed bollards.
- Rosalind Park fixed bench seating with back and armrests.
- Rosalind Park with pathways approximately 2500mm wide.
- View Bendigo CBD [access map](#) for the following accessible services:
 - » TTY telephones & public telephones
 - » infant feeding and baby change rooms
 - » free wheelchair and scooter recharge points
 - » audible pedestrian crossing
 - » seating
 - » drinking fountains.



ACCESSIBILITY MAP

Changing Place – Hargreaves Street Multi Storey Car Park (MLAK Key needed for access, toilet available 24 hours a day)

Marveloo

Accessible toilets
 Rosalind Park
 Queen Elizabeth Oval
 Tom Flood Sports Centre
 Easter Fair Way (Taxi rank)
 Hargreaves Street Multi Storey Car Park
 Mews Lane Way (behind Bendigo Visitor Information Centre)

Accessible parade viewing
 View Street (Mackenzie Street intersection)
 Alexandra Fountain, Pall Mall
 McCrae Street (Chapel Street intersection)

Accessible parking (Friday to Sunday)
 Williamson Street

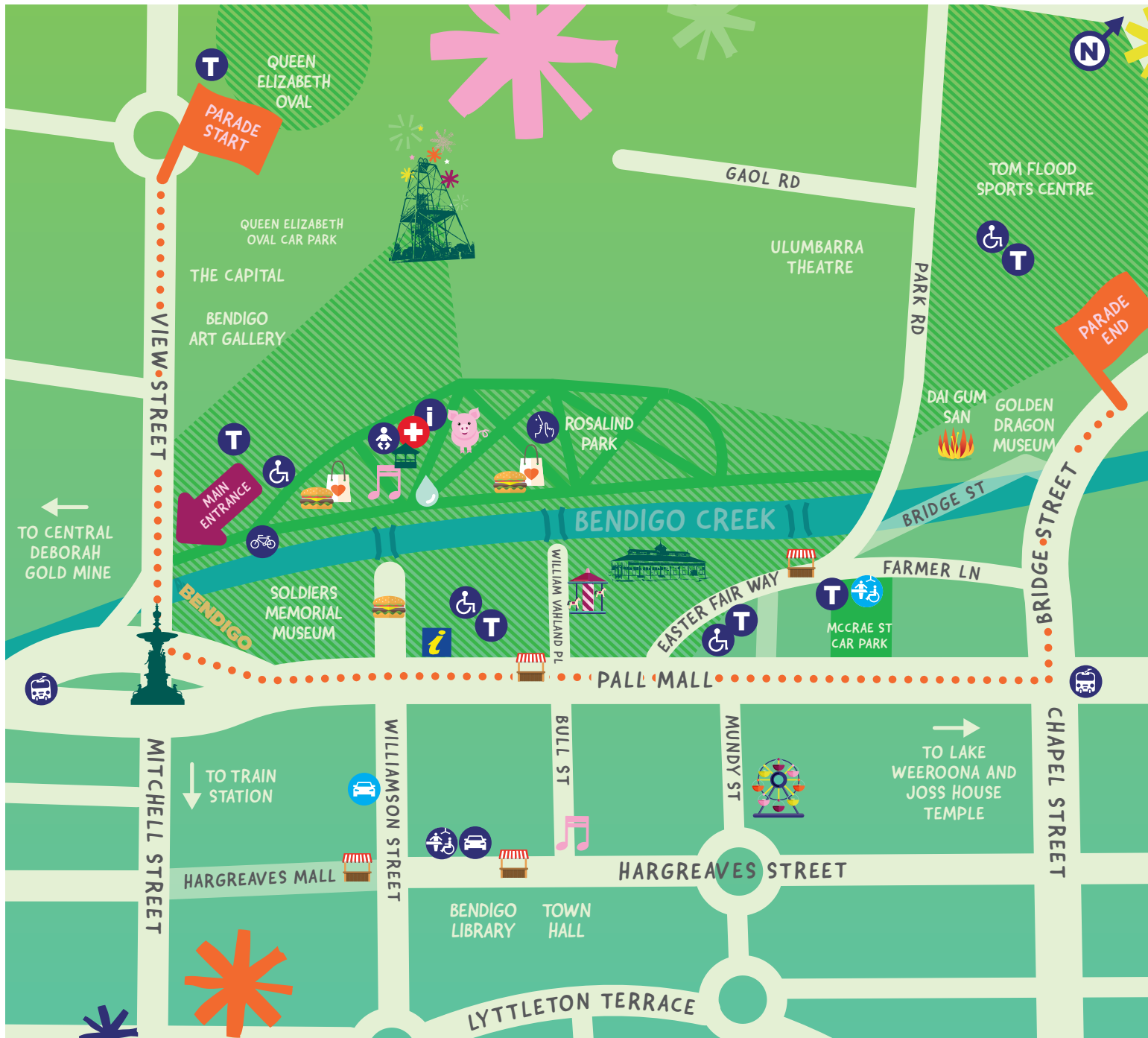
Accessible parking (Parade times only)
 McCrae Street (in front of St Killians)
 Mitchell Street
 Mackenzie Street
 Bath Lane (access via Mitchell Street)
Please display accessible parking permit at all times and present to Traffic controller to access.

Lively chill out zone

Parade route



Click [here](#) for City Of Bendigo CBD Map



BENDIGO EASTER FESTIVAL

MARCH 29 - APRIL 7

-  TOILETS
-  ACCESSIBLE TOILETS
-  PARENT ROOM
-  CHANGING PLACES
-  MARVELOO
-  BENDIGO VISITOR CENTRE
-  EVENT INFORMATION AND LOST PERSONS
-  FIRST AID
-  FOOD
-  HYDRATION STATION
-  LIVELY CHILL OUT ZONE
-  PARK 'N' RIDE TRAM STOP
-  MULTI STOREY CAR PARK
-  ACCESSIBLE PARKING
-  BIKE PARKING
-  RETAIL
-  MARKETS
See program for days and locations

Getting There

The 2024 Bendigo Easter Festival is located in Rosalind Park and surrounding streets.

See [Google Maps](#).

Bendigo Railway Station is located on Railway Place, Bendigo, approximately 1.5km from Rosalind Park.

Easily attend the Easter Festival by using a Bendigo Tramways Park 'n' Ride Tram shuttle ticket. Avoid traffic and parking issues by taking one of Bendigo's iconic trams. Tram stops at Central Deborah Gold Mine, Lake Weeroona and Bendigo Joss House Temple allow you to travel easily to and from the CBD.

Tickets are valid all day allowing you to go to and from the Easter Festival. \$5 per person. Children 15 and under are FREE.

Timetables and tickets available online at: bendigotramways.com.

Please refer to our [website](#) for road closure information.

For further information on how to get to the festival, please visit [Public Transport Victoria](#).



Parking

Accessible parking will be available.

There is a car park for accessible users close to the festival precinct in Williamson Street (available Friday – Sunday).

The following accessible parking will be available for parade times only:

- McCrae Street (near Chapel/Bridge Street intersection)
- Mitchell Street (Pall Mall end)
- Mackenzie Street (View Street end)
- Bath Lane (access via Mitchell Street).

Please display disability permit at all times and present to traffic controller to access the areas available for parade times only.

These locations have been detailed in the [accessibility map](#).

Bus and long-haul parking will be available at:

- Bath Lane
- Hopetoun Street
- Hargreaves Street (near Bendigo Bowling Centre)
- Coach parking will be available at Tom Flood Sports Centre on Friday only. Coach parking at Tom Flood Sports Centre will not be permitted from 6am Saturday March 30 to 6pm Sunday March 31.



Bike racks are available in Rosalind Park just inside of the View Street entrance. The bike parking area is available from 10am - 5pm Good Friday, Easter Saturday and Easter Sunday. Please bring your own lock.

For further information, please refer to map on [page 7](#) or go to bendigo.spotparking.com.au.

Staff

Bendigo Easter Festival staff wear black t-shirts with high visibility vests.

Volunteers wear teal blue t-shirts with the word 'Volunteer' on the arm.

During the festival there are a number of ways to find information:

- the information tent located in the centre of Rosalind Park near the Rotunda
- Bendigo Visitor Information Centre in Pall Mall can help you with event information, as well as general information on visiting the Bendigo region.
- program information is available on our [website](#)
- the Bendigo Easter Festival [Facebook](#) page.

Security staff wear a grey and pink uniform with a pink high visibility vest.

St. John Ambulance Australia (Victoria) will have a first aid station in Rosalind Park, near the rotunda building. First aiders will also be on bikes throughout the fair.

St. John Ambulance Australia (Victoria) first aid staff wear a jumpsuit with the medical cross visible on their back.

Vision Australia's Easter Egg Hunt

Vision Australia volunteers wear bright yellow t-shirts with a Vision Australia logo.

Corporate volunteers will also be present to work alongside the Vision Australia volunteers. They will be wearing their own branded t-shirts.

SES staff will also be available to assist.



Changing Places

Changing Places toilets have extra features and more space to meet the needs of people with disabilities or additional requirements.

Location

Across the road from Bendigo Library on Hargreaves Street. It is at the multi-storey car park entrance on the ground floor.

Includes:

- one all genders, fully accessible toilet and adult change facility with sensor lighting
- MLAK Key required for access
- MLAK lock height 990mm AFFL
- sliding door. Door clearance of 1000mm. Push button lock 1170mm AFFL
- cubicle space 4300mm x 3150mm
- retractable grab bars on both sides of toilet
- colour contrast toilet seat height 470mm with left- and right-hand transfer
- sink height 830mm AFFL with knee clearance. Lever tap at 960mm AFFL
- shower with HSHS, grab bars and

shower bench

- signage detailing operating instructions for safe use of the change table and ceiling hoist located on the wall on top of change table
- sharps unit
- sanitary bin
- adult change table – electric height adjustable change table with 200kg weight loading capacity
- ceiling hoist Waverly Glen C450 hoist with 205kg weight loading capacity
- exit button 1000mm AFFL.

Users are required to provide their own sling. Please ensure it is compatible with the hoist. If there is any uncertainty, please do not use hoist.

Changing Places facilities require a Master Locksmiths Access Key to access. Users are encouraged to bring their own MLAK. An MLAK can be ordered from the [Master Locksmiths Association of Australasia](#) by completing the MLAK order form.



Sensory Guide



Feel
Change in ground surface



Sounds
Echo
Hand dryer
Toilet flushing
Water running



Sights
Bright lights
Mirror/Reflection



Smells
Bathroom smells
Disinfectants



At the fair there will be a mobile Changing Places facility, also known as a Marveloo.

The Marveloo is a portable accessible restroom catering for people with disabilities or additional requirements.

It will be open Good Friday, Easter Sunday 10am – 5pm and Easter Saturday 10am – 9.30pm.

Location: McCrae Street carpark, 139 McCrae Street (see map on [page 7](#)).

Includes:

- external sunshade
- 4.5m access ramp with handrail
- one all genders, fully accessible toilet and adult change facility with artificial lighting
- door 1: manual door opening inward. Door clearance 870mm
- door 2: automatic with push button at 960mm AFFL. Door 2 opens inward. Door clearance 870mm
- push button lock at 1100mm AFFL

- grab bars to the left and behind toilet
- toilet height 460mm AFFL with left hand transfer
- sink height 830mm AFFL with lever tap 980mm AFFL
- privacy curtain
- heating and cooling
- hand dryer
- sharps unit
- signage detailing operating instructions for safe use of change table and ceiling hoist located on wall above change table
- electronically height adjustable and manual foldable table with maximum load 170kg
- overhead C450 Omni ceiling hoist with weight capacity 204kg
- push button to exit Marveloo 930mm AFFL.

Users of the Marveloo are required to provide their own sling for the ceiling hoist and are advised to check that their sling

is compatible with the C450 Omni hoist prior to use. If there is any uncertainty, please do not use hoist.

Watch our [video on YouTube](#) to learn more.



Sensory Guide



Feel
Change in ground surface



Sounds
Echo
Hand dryer
Toilet flushing
Water running

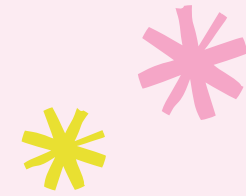


Sights
Bright lights
Mirror/Reflection



Smells
Bathroom smells
Disinfectants

Amenities



At the Bendigo Easter Festival, there are four sets of accessible toilets as well as additional public toilets. For further information please refer to the accessibility map on [page 7](#).

Location: Tom Flood Sports Centre, Park Road.

Park Road with gradients 1:20 to 1:14. Access is stepped or via a six-metre access ramp at approximate gradient 1:27 (3.7%).

Includes:

- one all genders, accessible toilet with natural lighting
- manual door opening inward. Door clearance of 860mm. Twist lock at 1060mm AFFL
- cubicle space 3000mm x 2500mm
- grab bars to the right and behind toilet
- toilet height 470mm AFFL with right hand transfer
- sink height 800mm AFFL with manual push operated tap at 830mm AFFL
- nine separate all genders toilet cubicles.

Location: Corner of Pall Mall and Easter Fair Way(Bridge Street).

Access is via an 8.5 metre inclined pathway with approximate gradient 1:18 (5.4%).

Includes:

- one all genders, accessible toilet with artificial lighting
- manual door opening inward. Door clearance of 850mm. Twist lock at 1050mm AFFL
- cubicle space 2300mm x 2500mm
- grab bars to the left and behind toilet
- toilet height 490mm AFFL with left hand transfer
- sink height 800mm AFFL with manual push operated tap at 830mm AFFL
- two all genders ambulant toilets.

Location: Queen Elizabeth Oval, View Street.

View Street with crossfall and very steep gradient.

Includes:

- one all genders, accessible toilet with artificial lighting
- manual door opening inward. Door clearance of 850mm. Twist lock at 900mm AFFL
- cubicle space 2300mm x 3000mm
- grab bars to the right and behind toilet
- toilet height 490mm AFFL with right hand transfer.
- contrast toilet seat
- sink height 830mm AFFL with manual push operated tap at 840mm AFFL
- baby change area
- separate men/boys and women/girl's toilets.

Location: Behind the Bendigo Visitor Information Centre, within Mews Laneway. Enter via Williamson Street.

Includes:

- all genders, accessible toilet with artificial lighting
- two doors, both opening inwards. Door clearances of 850mm. Twist lock at 900mm AFFL
- cubicle space 2900mm x 1900mm
- grab bars to the right and behind toilet
- toilet height 470mm AFFL with right hand transfer
- sink height 830mm AFFL with lever tap at 920mm AFFL.
- separate men/boys and women/girl's toilets.



There will also be portable toilets located in Rosalind Park and behind the Golden Dragon Museum.

Food and Drink

Food, drink and retail sites will operate across the event precinct Good Friday – Easter Sunday, with outlets located in the main food court in Sidney Myer Place, Carnival Central as well as two locations in Rosalind Park.

For locations, view event map on [page 8](#).



Program of Four Day Event



Good Friday

The Festival is just beginning!

Highlights

- Carnival Central
- Vision Australia Easter Egg Hunt
- Rotary Market
- Farmer Darryl's animal farm
- Fosterville Gold Mine panning for gold

Friday's full [program](#).

Easter Saturday

The big day!

Highlights

- CFA Kids Amusement Rides
- O'Brien Electrical & AC Torchlight Procession followed by fireworks
- Octonauts
- Awakening of the Dragon
- Moonlight Easter Market

Saturday's full [program](#).

Easter Sunday

Check out what's on!

Highlights

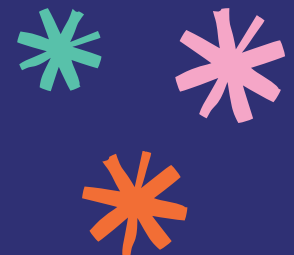
- Sherridon Homes Gala Parade
- Rotary Market
- Return of the Dragon
- CFA fire truck rides
- Bull Street Music Festival

Sunday's full [program](#).

Easter Monday

Various community events continue to run on Monday.

Monday's full [program](#).



Rosalind Park

Over the four-day Easter long weekend, Bendigo's beautiful Rosalind Park will be transformed into a vibrant precinct bursting with family-friendly entertainment and activities.

Location: 30 Gaol Road, Bendigo

When: Good Friday - Easter Sunday (10am - 5pm each day)

Access:

Recommended entry point for wheelchair users and prams is View Street. Bridge access points into Rosalind Park may become congested due to the large volume of people attending the fair.

Limited fixed bench seating with back and armrests are scattered throughout the park. The main stage area will also provide limited seating with backrests. It is recommended patrons bring their own seating.



Feel
Change in ground surface
Shared personal space
Weather



Sounds
Bell (Fire Truck)
Clock chime
Music | Nature
Traffic



Sights
Glare
Moving crowds
Roving performers



Smells
Food/Drink
Nature
Canal Mineral
Sunscreen

Sensory
Guide

Easter Egg Hunt



Be in the hunt for over 85,000 Easter eggs on Good Friday at Vision Australia's Easter Egg Hunt.

Location: Rosalind Park, near the rotunda.

When: Good Friday 9.30am - 5pm.

Access:

Ticket entry only. Tickets \$15 each, available to purchase from 16th February.

There is no shade in this immediate location. Please dress appropriately and remember to use sunscreen and keep hydrated.

The "Egg-citing" Hunt

- Please arrive 10-15 minutes in advance of the time on your ticket.
- Each participant must produce their purchased hunt ticket (ticket can be shown on a device) at the "ENTRY" - BLUE FLAGS area to receive their hunt bag.
- Instructions will be issued by an announcer.

- A countdown will take place then the hunt will start when the whistle blows.
- This activity will be staggered according to age groups:
- Accessible Easter Egg Hunt: Parent enters the hunt with the child and assists them to locate chocolate eggs.
- Ages 3 and under: Parent enters the hunt with the child and assists them to locate chocolate eggs.
- Ages 4 to 5 and ages 6 to 8: Parent may enter the hunt however is required to stand along the fence line while the child hunts for the eggs.
- All other age groups: the parent will accompany the child to the entrance, the children are ushered to the holding area (fully enclosed) where they wait until their hunt is called.
- Parents may wait along the fence line (outside) to watch their children participate in the hunt.
- Each egg hunt will go for 10 minutes.
- All participants must then exit the arena through the allocated "EXIT" - YELLOW FLAGS gate at the completion of the hunt.
- Volunteers will be at the exit area gate to reunite parents with children.

Sensory Guide



Feel
Change in ground surface
Shared personal space
Weather



Sounds
Amplified voice
Bell (Fire Truck)
Clock chime
Music | Nature
Traffic



Sights
Glare
Moving crowds



Smells
Food/Drink
Nature
Canall
Sunscreen

Carnival Central

Enjoy the excitement of the carnival atmosphere. Delight in the thrill of the rides and try your luck along sideshow alley.

Location: Mundy Street, see map on [page 8](#).

When:
 Good Friday and Easter Saturday 10am to 11pm.
 Easter Sunday 10am to 6pm.

Access:
 Rides incur a fee. Some ride operators accept cash only. Others will accept cash or EFTPOS. An ATM will be available within the food court area.



Sensory Guide


Feel
 Dizziness
 Harnesses
 Sinking stomach
 Shared personal space


Feel
 Thrill
 Weather
 Weightlessness
 Movement
 Spinning


Sounds
 Loud rides
 Music
 Screaming


Sights
 Bright flashing lights
 Crowd movement
 Ride movement


Smells
 Food/Drink
 Fuel
 Nature
 Sunscreen

CFA Kids Amusement Rides

The Combined Bendigo Fire Brigade Kids Amusement Rides is provided for the community to enjoy. It includes a great range of rides for the small members of the family.

Location: William Vahland Place, see event map on [page 8](#).

When:

Good Friday 10am to 5pm.

Easter Saturday 10am to 9.30pm.

Easter Sunday 10am to 5pm.

Access:

Rides are \$5 each. Some ride operators accept cash only. Others will accept cash or EFTPOS. An ATM will be available within the food court area.



Sensory Guide



Feel

Dizziness | Harnesses
Sinking stomach
Shared personal space
Thrill



Feel

Weather
Weightlessness

Movement
Spinning



Sounds
Loud rides
Music



Sights
Bright flashing lights
Crowd movement
Ride movement



Smells
Food/Drink
Fuel
Nature
Sunscreen

Rotary Market

There will be more than 200 stalls across the two days, plus live local music and delicious food to enjoy.

Some stalls may accept cash only. Others will accept cash or EFTPOS. An ATM will be available within the Food Court area.

Location:

Good Friday - Pall Mall through to Easter Fair Way.

Easter Sunday - Easter Fair Way and Hargreaves Street.

When:

Good Friday 9am to 4pm.

Easter Sunday 9am to 4pm.

Access:

Allow adequate time to visit due to pedestrian congestion. On Easter Fairway visitors may need to navigate bluestone guttering. Park Road (Easter Fairway) with gradient from 1:20 up to 1:14.



Feel
Change in ground surface
Shared personal space



Feel
Weather
Uneven surfaces



Sounds
Clock Chime
Music
Nature
Traffic



Sights
Glare
Moving crowds
Roving performers



Smells
Food/Drink
Nature
Canal Minerals
Sunscreen

Sensory
Guide

Awakening of the Dragon

A traditional celebration of lion and dragon dance is presented by the Bendigo Chinese Association and visiting lion and dragon teams. Spectators can enjoy an exciting experience with the lion and dragon closely interacting with crowds.

It will conclude with the lighting of a spectacular string of 100,000 firecrackers used to wake Dai Gum Loong from his year-long slumber.

Location: Dai Gum San Chinese Precinct, Bridge Street.

When: Easter Saturday 2pm to 4pm.

Access:

Allow adequate time to visit due to pedestrian congestion. Visitors may need to navigate bluestone guttering in this area.



Feel

Change in ground surface
Shared personal space



Feel

Weather
Uneven surfaces



Sounds

Clock chime
Fire crackers (loud)
Music
Nature
Traffic



Sights

Glare
Moving crowds



Smells

Firecracker smoke
Food/Drink
Nature
Sunscreen

O'Brien Electrical & AC Torchlight Procession

Find your place along the road to cheer on the convoy of illuminated floats in the O'Brien Electrical & AC Torchlight Procession.

When the procession has finished a dynamic fireworks display will erupt over Rosalind Park.

Location: Parade route - View Street, Pall Mall, McCrae Street and Bridge Street. See event map on [page 8](#).

When: Easter Saturday, 7pm.

Accessible Parking (parade viewing only): There will be car parks for accessible users close to the procession. Locations are detailed on the map (see [page 7](#)). Further details can also be found on [page 10](#).

Access: Allow adequate time to visit due to pedestrian congestion. Visitors may need

to navigate bluestone guttering in these areas.

Bring your own seating.

Along the parade route there will be designated viewing areas for people using motorised scooters and wheelchairs. These areas will be clearly signed, please be considerate and keep these areas clear.

- View Street (Mackenzie Street intersection)
- Alexandra Fountain (Pall Mall and View Street intersection)
- McCrae Street (Chapel/Bridge Street intersection)

These locations have been detailed in the accessibility map.

Please note: the parade route along View Street from Pall Mall to Mackenzie Street reaches a gradient of 1:20, this should be

fine for a manual wheelchair. However, View Street from Mackenzie Street to Rowan St gradient is classed as very steep and requires manual chairs needing assistance to travel. For more information on gradients refer to [page 7](#).





Feel
Change in ground surfaces
Shared personal space



Feel
Weather/Night Air
Uneven surfaces



Sounds
Announcements
Cheering
Clock chime
Fireworks banging, popping



Sounds
Fireworks shooting
Music
Nature
Sirens (vehicles)
Traffic



Sights
Bright flashing lights
Moving crowds and floats
Flashing, shooting and sparkling fireworks



Smells
Firework smoke
Food/Drink
Nature

Sherridon Homes Gala Parade

Watch bands, cultural groups, dance troupes, sporting clubs, school groups and many more as they perform along the parade route.

Experience the excitement as Bendigo's newest Dragon Dai Gum Loong (the world's longest Golden Dragon), weaves his way through the historic streetscapes of Bendigo in his first solo parade outing.

Location: Parade route View Street, Pall Mall, McCrae Street and Bridge Street. See event map on [page 8](#).

Limited shade will be available. Please dress appropriately for the weather.

When: Easter Sunday 12:30pm.

Accessible Parking (parade viewing only):

There will be car parks for accessible users close to the parade. Locations are detailed on the map on [page 7](#). Further details can also be found on the parking [page 10](#).

Access:

Allow adequate time to visit due to pedestrian congestion. Visitors may need to navigate bluestone guttering in these areas.


Bring your own seating.

Along the parade route there will be designated viewing areas for people using motorised scooters and wheelchairs. These areas will be clearly signed, please be considerate and keep these areas clear.

- View Street (MacKenzie Street intersection)
- Alexandra Fountain, Pall Mall
- McCrae Street (Chapel/Bridge Street intersection)

These locations have been detailed in the accessibility map on [page 7](#).






Feel
Change in ground surface
Shared personal space




Feel
Weather
Uneven surfaces



Sounds
Announcements
Cheering
Clock chime
Firecrackers



Sounds
Music
Traffic



Sights
Bright flashing lights
Moving crowds
Moving entertainment
Interactive Dragon



Smells
Firecracker smoke
Food/Drink
Nature

Fireworks

A spectacular fireworks display will take place during the Bendigo Easter Festival.

This display will be noisy and bright.

The firework display will be colourful and the fireworks may appear to spin, whisk, shoot or dart into the night sky.

Location: Poppet Head in Rosalind Park.
See event map on [page 8](#).

When: The fireworks display will be after the O'Brien Electrical & AC Torchlight Procession on Easter Saturday.

Access:
Allow adequate time to visit due to pedestrian congestion. We recommend patrons bring their own seating.

Safety Considerations:
The fireworks operation area is an exclusion zone.



Sensory Guide



Feel
Shared personal space
Weather/Night air



Sounds
Announcements
Fireworks banging,
popping and
shooting



Sights
Bright flashing lights
Fireworks flashing,
shooting and
sparkling



Smells
Firework smoke

Safety



Throughout Event Site

Varied terrain including uneven paving, cobblestones, bluestone guttering, matting around tree bases, grass and concrete.

Crossfall on pathways.

Some pathways with varied gradient.

Tram tracks throughout CBD.

Cables may extend across ground surfaces (appropriate cable trays provided).

Concrete bollards at road closures for additional safety.

Security patrol throughout site.

First aid on site.

Defibrillator at first aid station.

Overhanging foliage.

Crowds estimated to reach 80,000 for the 4-day event.

If you become separated from your child and/or a person in your care, please go directly to the first aid/lost children/persons tent located near the rotunda in Rosalind Park and request assistance from security or staff.

Event is smoke-free. Please smoke outside the event precinct. This includes the parade route.

Tom Flood Sports Centre Toilet

Steps and access ramp with handrail and TGSi at top and bottom.

Rosalind Park

Williamson Street access bridge subject to pedestrian traffic congestion. Please access park via View Street.

William Vahland Place access bridge with crowd control fencing. Not recommended as an access point to park due to pedestrian congestion. Please access park via View Street.

Additional lighting throughout park at night during programmed events.

Additional rubbish bins provided and positioned off main pathways.

Varied provision of shorelines.

Please do not gather or consume any mushrooms found in Rosalind Park.

Vision Australia's Easter Egg Hunt

To ensure the safety of all participants in the egg hunt, no running, pushing or moving will be allowed. Participants are not to kick the woodwool as it creates excess dust. VA volunteers and SES available to assist.

CFA Kids Amusement Rides

Crowd control fencing will be in place at the end of the bridge leading from CFA Kids Rides into Rosalind Park to aid with crowd control.

It is recommended patrons avoid the access point from CFA Kids Rides into Rosalind Park on Saturday and Sunday due to vintage fire engine travelling throughout the park.

Parades

Terrain with varied gradient and pathway crossfall.

Some areas of parade route with tram tracks.

Crowd control barriers and large flags on roads set up for parade routes.

Designated parade crossing points.

Security and Marshals on parade route.

Accessible viewing areas not patrolled.

Parade routes will be identified with large flags. Designated parade crossing points only to be used.

Bendigo Visitor Information Centre

Gated entry to accessible entrance of centre with trip hazards on ground.

Contact us

City of Greater Bendigo

15 Hopetoun Street,

Bendigo, Victoria

Phone 1300 002 642

Email: requests@bendigo.vic.gov.au

www.bendigoeasterfestival.org.au

[Facebook](#) | [Instagram](#) | [YouTube](#)



CITY OF GREATER
BENDIGO

